

STATION NUMBER 1:

Diagnosis the following case & treated it:

A/

Diagnosis: Fin rot

Treatment: water bath with copper sulphate 1:2000 for 1-2 minute



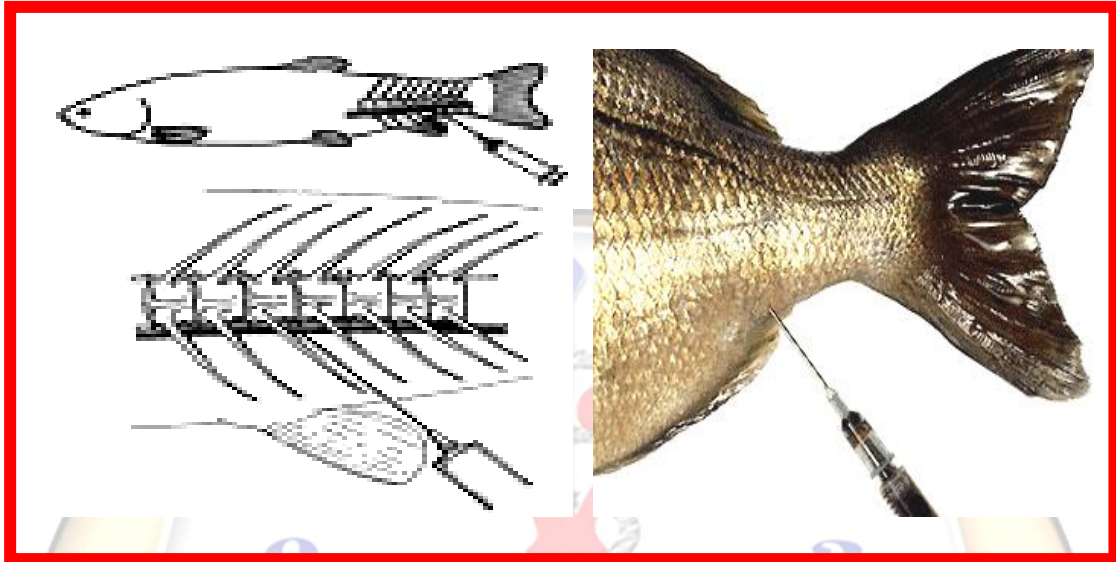
B/ **Diagnosis: White spot disease**

Treatment: elevating water temperature to 30 C at least for three weeks and use malachite green 15mg/ 100L for 1 hour.



STATION NUMBER 2:

Mention the target artery that used in blood collection from by this technique



Caudal Blood Vessels (Tail Artery)



STATION NUMBER 3:

Marked variation in morbidity, mortality, signs and lesions of respiratory manifestation or nervous signs or both, Gasping, coughing, nasal and ocular watery discharge with dark edema around the eye, tremors, convulsions and torticollis, with leg and wings paralysis, Proventricular hemorrhages cecal tonsil necrosis.

1- Suspected disease?

ND

2- Named the causative agent?

Paramyxovirus

3- Is zoonotic disease?

Yes

4- Mention one D.D.?

Avian Influenza, IB, Coryza

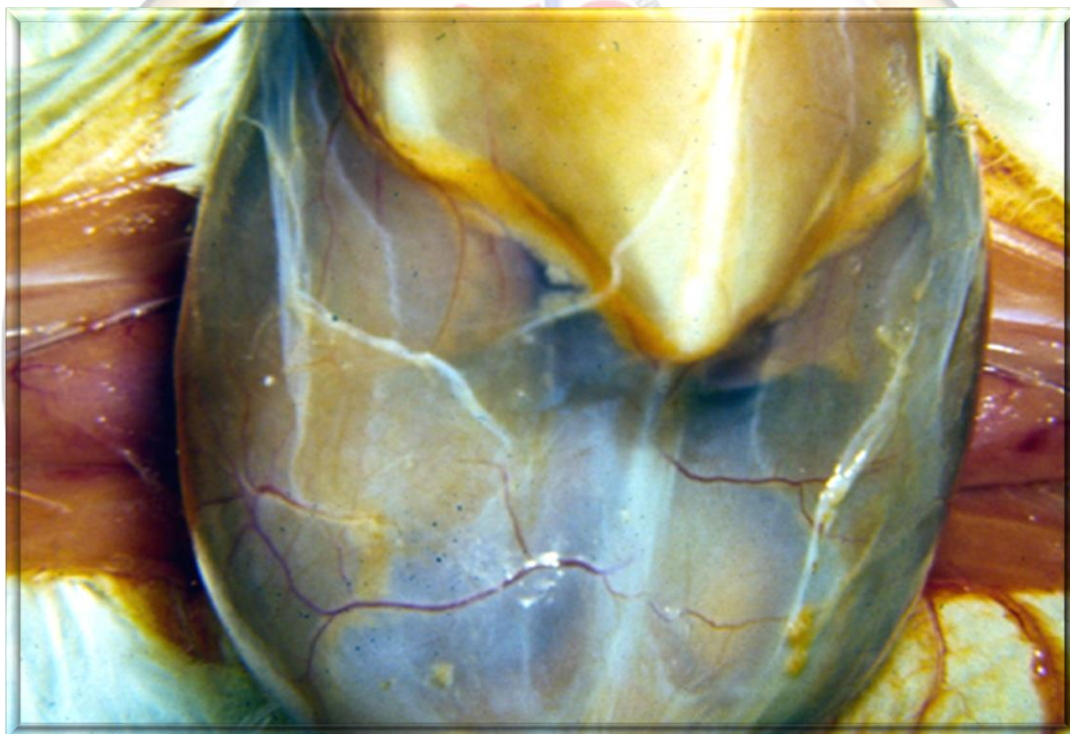


STATION NUMBER 4:

Clinically affected broiler chickens are smaller than normal and depressed with ruffled feathers. Severely affected birds show abdominal distension with reluctance to move, respiratory distress, and cyanosis. Accumulation of straw-colored ascitic fluid in the peritoneal cavities, Hypertrophy is soon followed by dilation, right ventricular failure, passive congestion

- 1- What is suspected disease? *Ascites***
- 2- Mention the conditions that lead to this case?**

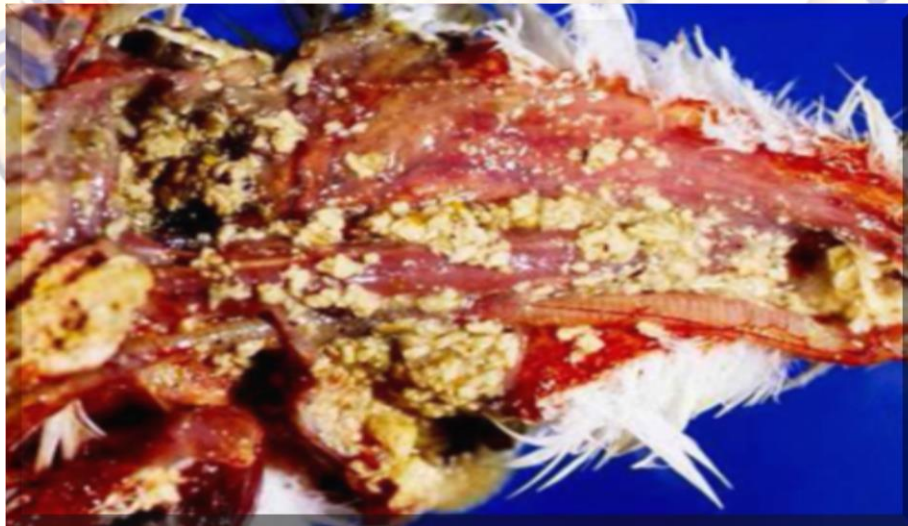
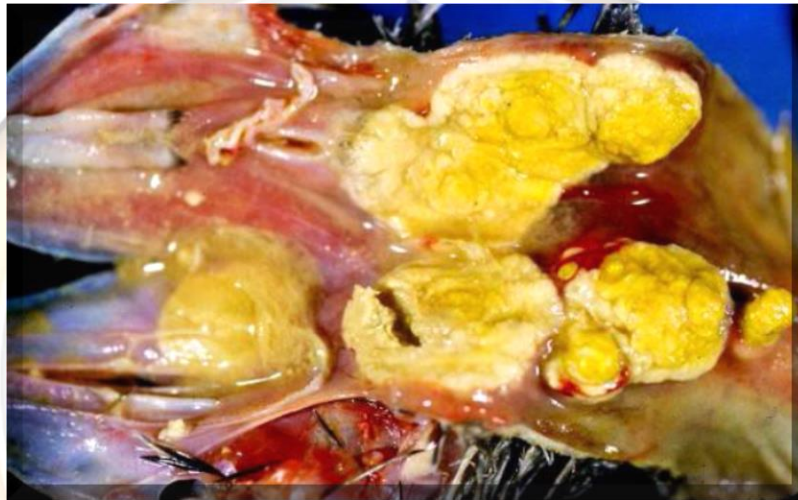
Lack of protein in diet, increase salt in diets, overcrowding, decrease in oxygen



STATION NUMBER 5:

Clinically racing pigeon, you can see yellow plaque raised caseous or cheesy masses lesions in the upper digestive tract but may extend to other tissues. masses often are invasive in soft tissue lesions are usually most extensive in the mouth, pharynx or esophagus but may occur at other sites including the crop, proventriculus

- 1- What is suspected disease? **Trichomoniasis (canker)**
- 2- How you can have treated? **Mentothinadal (Metronidazole)**
- 3- D. D.? **Vit A deficiency, Pox, Candidiasis**



STATION NUMBER 6:

In young poultry the characteristic clinical sign is “curled toe” paralysis caused by lesions to the sciatic nerve. Weakness of the legs, in severe cases birds walk on their hocks with the aid of their wings at rest, the wings may droop. Specific changes in the main peripheral nerve trunks. There may be marked swelling and softening of sciatic and brachial nerves. Myelin degeneration,

- 1- What is suspected disease? **Riboflavin Deficiency (B2)**
- 2- How you can have treated? **Add deficient vitamin**
- 3- D.D.? **Ricketts, *Mycoplasma synovi***



STATION NUMBER 7:

Clinically broiler in 3 weeks age you can see ataxia, water filled crop, birds show intoxication. lesion: extreme dehydration, dark congested liver entire mid and lower small intestine have "cooked" appearance. mucosa looks like a "dirty Turkish towel".

- 1- What is suspected disease? **Necrotic Enteritis**
- 2- That is zoonotic disease? **No**
- 3- How you can have treated? **Neomycin sulfate, Spectromycin, Enrofloxacin.**



STATION NUMBER 8:

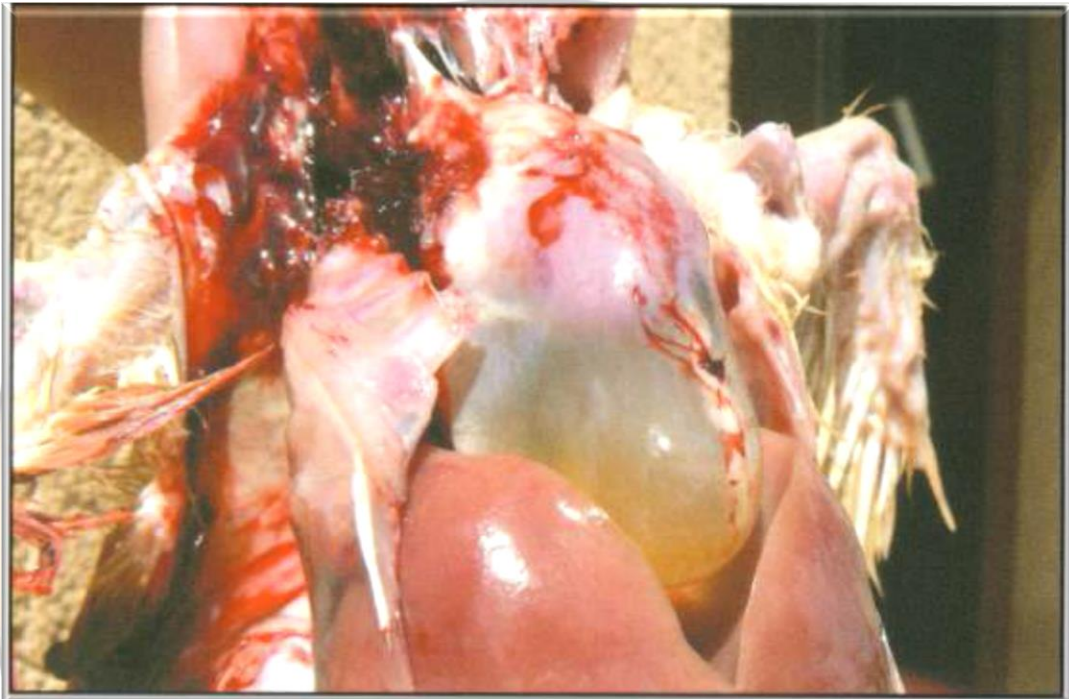
- 1-Which type of vaccine is this used? **Killed Vaccine (NV)**
- 2-Mention the route of administration? **Injection IM, Sc.**
- 3- Which of disease used? **ND.**



STATION NUMBER 9:

Clinically a broiler flock in 4-5 weeks show the bird listless, with ruffled feather, mortality is usually severe, up to 25% affected chicken have enlarged and mottled in liver, pale in bone marrow and kidney and accumulation clear liquid around the heart

- 1- What suspected disease? **Hydropericardium Hepatitis Syndrome HHS**
- 2- D.D.? **Ascites, Salmonellosis.**



STATION NUMBER 10:

- 1- What is the indication of this drug? **Broad spectrum antibiotic**
- 2- Mention route of administration? **Orally**

