

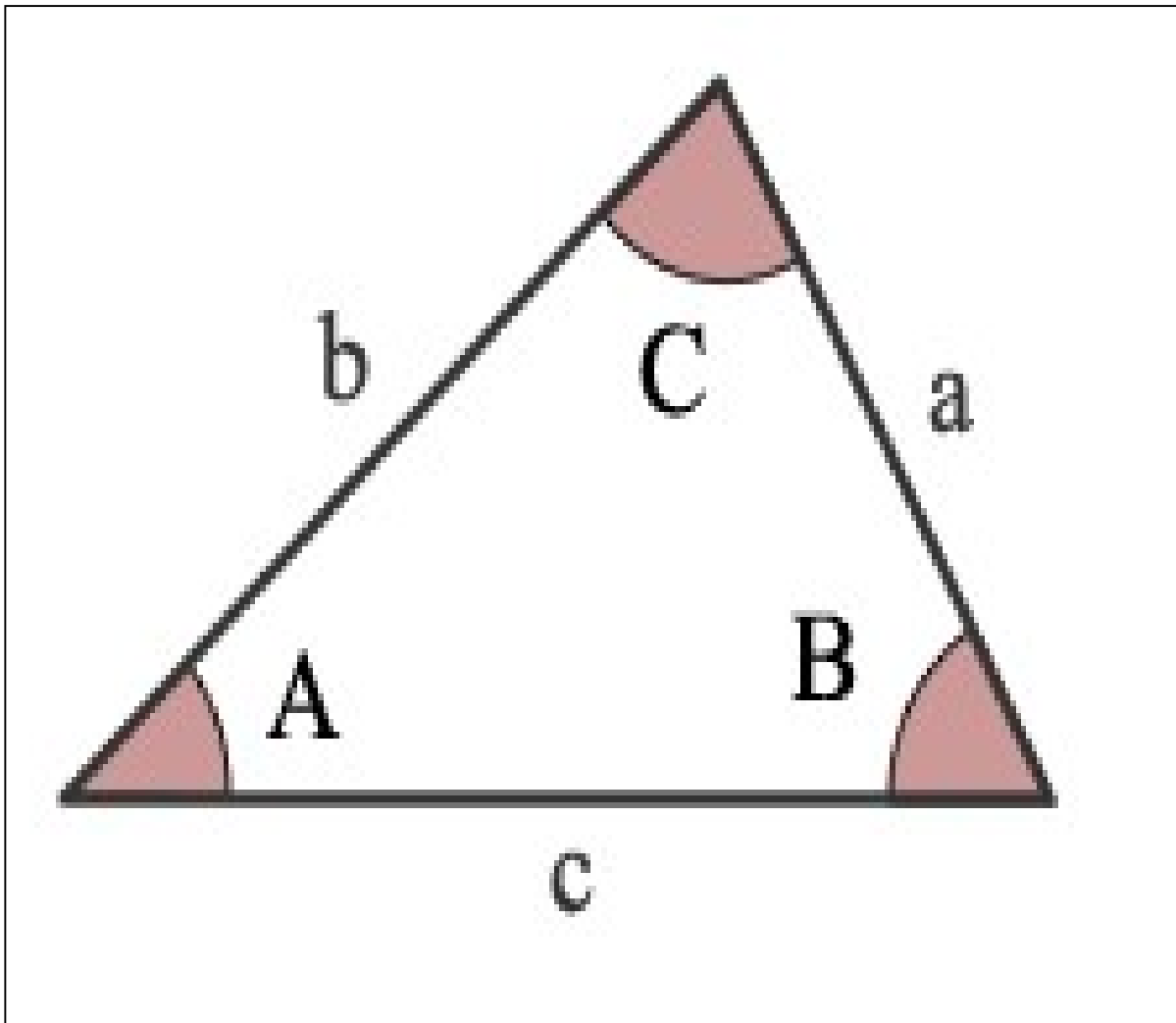
Department of Networks

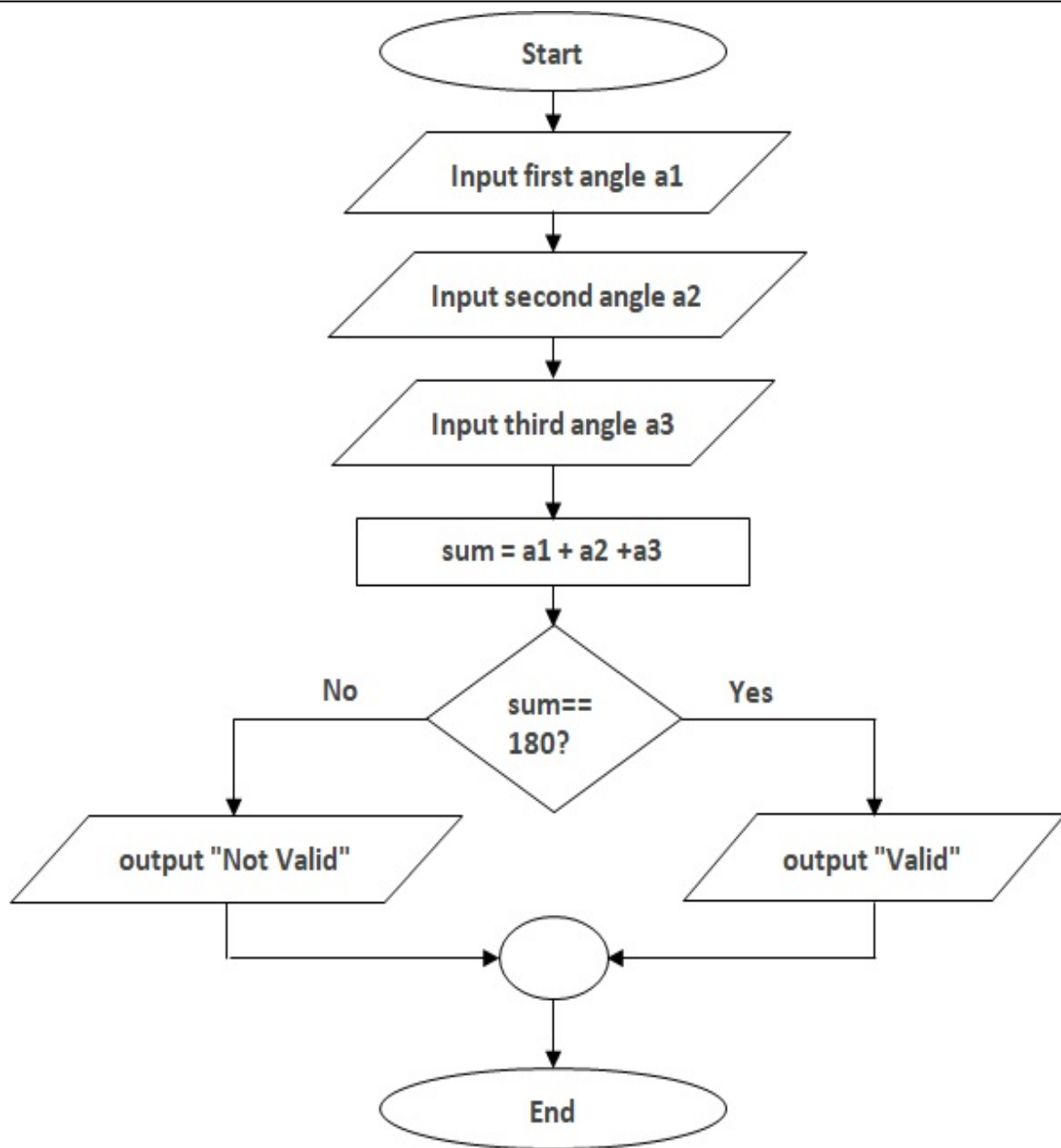
First Year

Problem Solving and Programming 1

Review

- **Example 1:** Write a C++ program to enter three angles of a triangle and check whether triangle is valid or not (Hint: summation of triangle angles = 180)





- **Example 2:** Write a C++ program to enter a point (x,y) and determine in which quadrant the coordinate point lies. (Example: input 6 2 output: first quadrant)

