

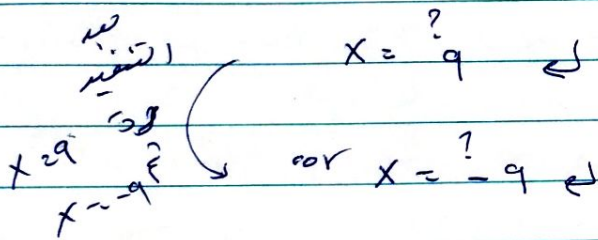
Lecture 13

② if - else - end : Used for two conditions

Ex write program to read the value of x, if it is positive, print (positive), otherwise print (negative)

sol.

```
>> x = input('x = ');
    if x >= 0
        disp('positive')
    else
        disp('negative')
    end
```



Ex write program to find solutions to the following equation

$$z = \begin{cases} x + 5 & x < 0 \\ \sqrt{x} & x > 0 \end{cases}$$

```
>> x = input('x = ');
    if x > 0
        z = sqrt(x);
    else
        z = x + 5;
    end
    disp(z)
```