

Change Control

Enterprise Architect supports features for monitoring changes to requirement definitions. These include:

- 1- Auditing.
- 2- Managing Baselines.
- 3- Element Change requests and Issue logging.

Auditing

The Audit feature enables you to record model changes in Enterprise Architect. It records details of who changed an element, when and what was changed, and the prior state of the model. This can be particularly useful for recording a history of changes to requirements models.

Configure \longrightarrow model \longrightarrow Audit

Figure (1) is an example of viewing alterations to an element directly in the Audit View. This shows a number of alterations with the first selected to show the details on the right pane.

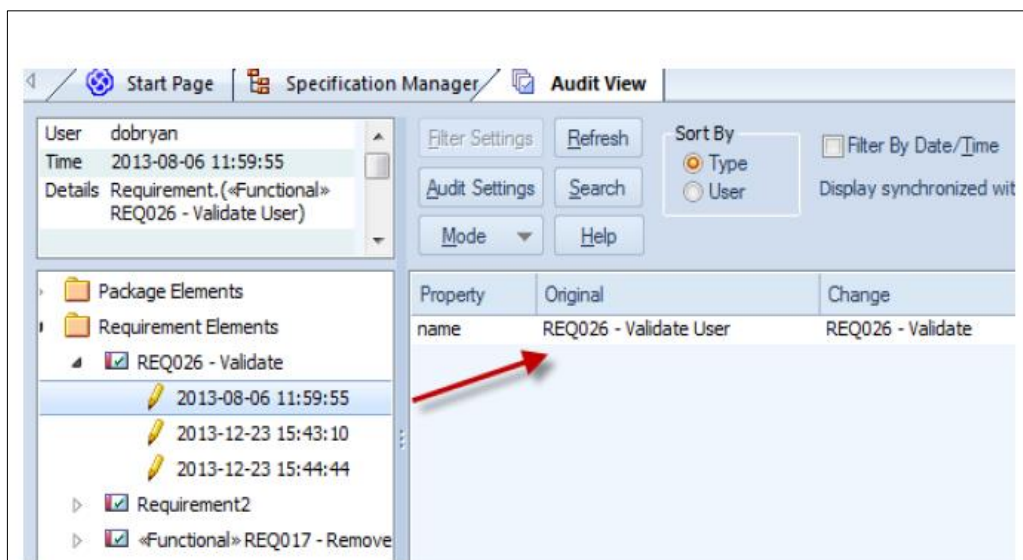


Figure (1) Audit view showing a list of alterations with the details of a Name change shown

Notes:

- 1- The green tick  : indicates a creation.
- 2- The yellow pencil  : indicates an edit.

3- The red cross  : indicates a deletion

Using Baselines

The auditing feature outlined above provides continuous tracking and logging of changes to requirements. The Baseline Management feature provides additional support for comparing and merging changes. It allows Baselines of a model to be created on a periodic basis (such as by month, phase, version or build). Baselines can then be compared to the current model and changes selectively rolled back.

Design  Baseline

Change Requests and Issues on External Requirements

Enterprise Architect supports logging of Change-requests against requirements. This can be defined using two different methods:

- a) Using the Maintenance window to list Changes, Defects, Issues and Tasks against each element.
- b) Using custom elements of type 'Issue' and 'Change' linked to the External Requirements being altered.

Each has their different uses which are outlined as follows:

Using the Maintenance window

The Maintenance window can be used to log changes against any element or package. This provides listings for:

- Element Defects
- Element Changes
- Element Issues
- Element Tasks

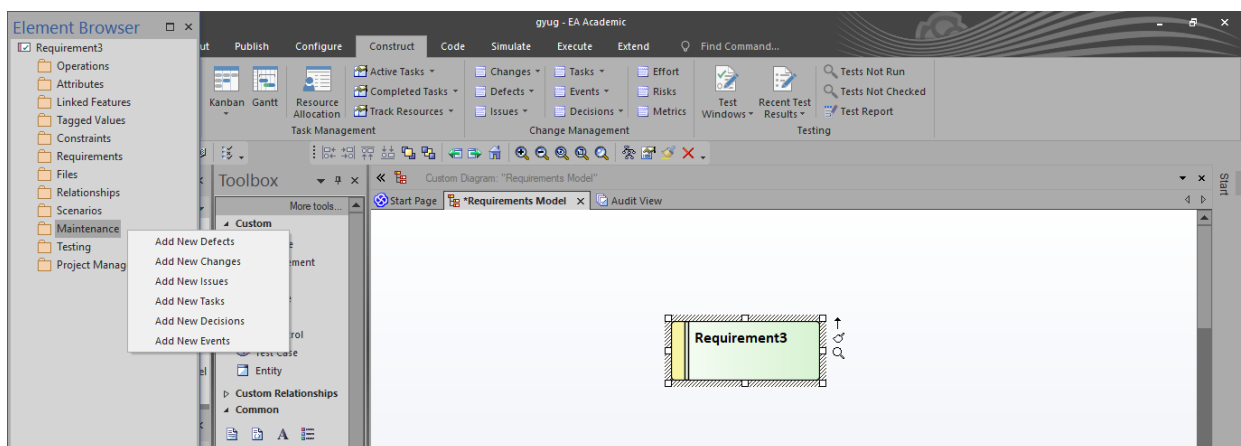
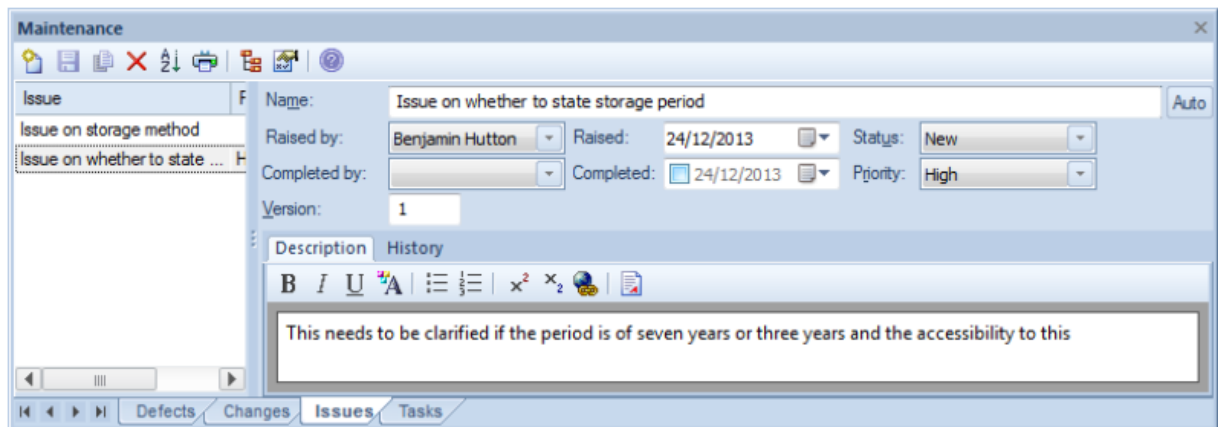
These include fields for recording 'by whom' and 'when' the request was made and completed, as well as Status, Priority, Description and History. The

Requirements management using enterprise architect

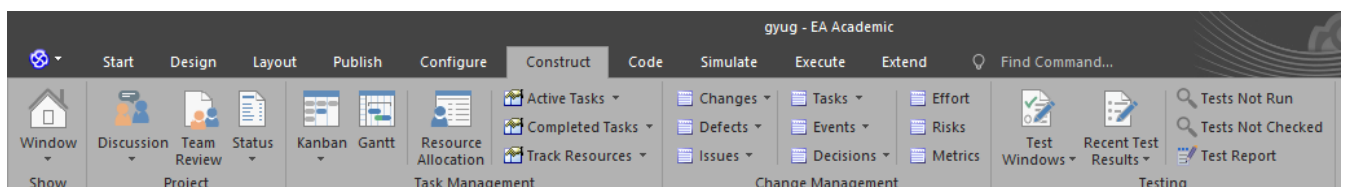
Rasha Ghanem - Atica Mohammed - Taghreed Riyadh

Maintenance window can be accessed from the main menu using: (Alt+4).
Figure 2 is an example of a set of changes listed for an element:

1- Windows Element browser maintenance



2- Construct



Note: to control the formatting of the relationship arrow path

rk on arrow  bend line at cursor (Ctrl + Q)