

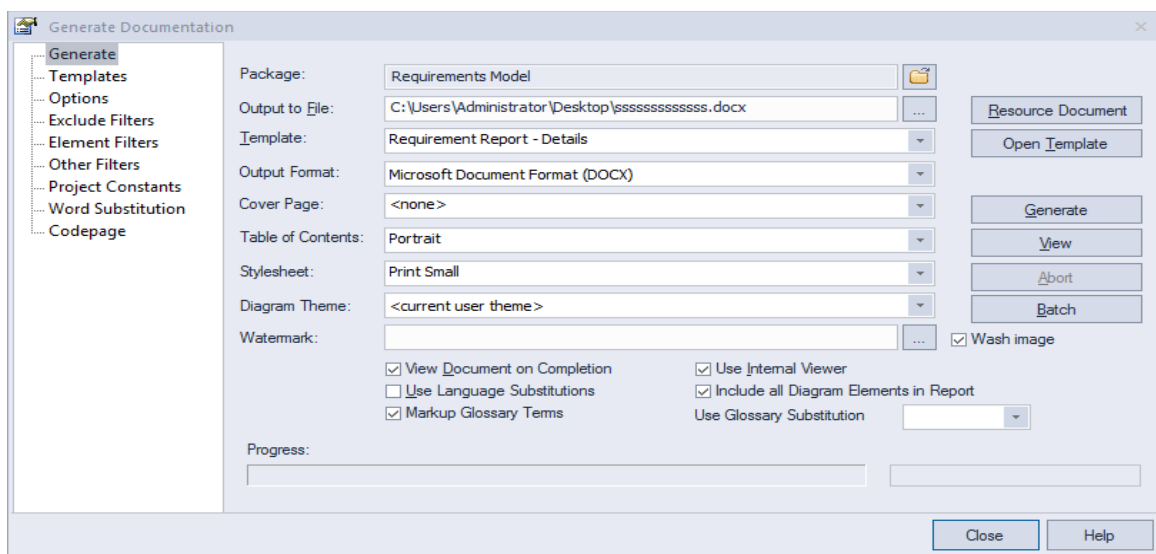


## Creating quality requirements documentation

A definition of a requirement is often used as a contract either between different departments within an organization or between organizations. Therefore, it is often required that high quality documentation of this definition can be generated.

### 1- Create report

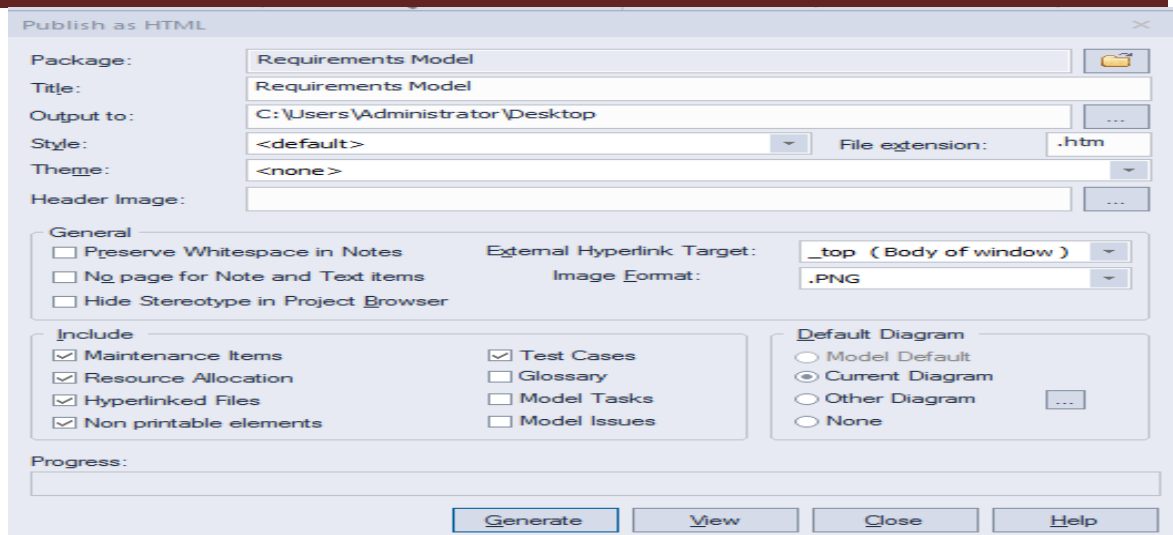
To create report RC on main Package  documentation  Generate documentation :



### 2- Create web page for Requirement diagram

To create web pages RC on **main Package**  documentation  Html report(Shift+F8):

## Requirements management using enterprise architect Rasha Ghanem Atica Mohammed - Taghreed Riyadh

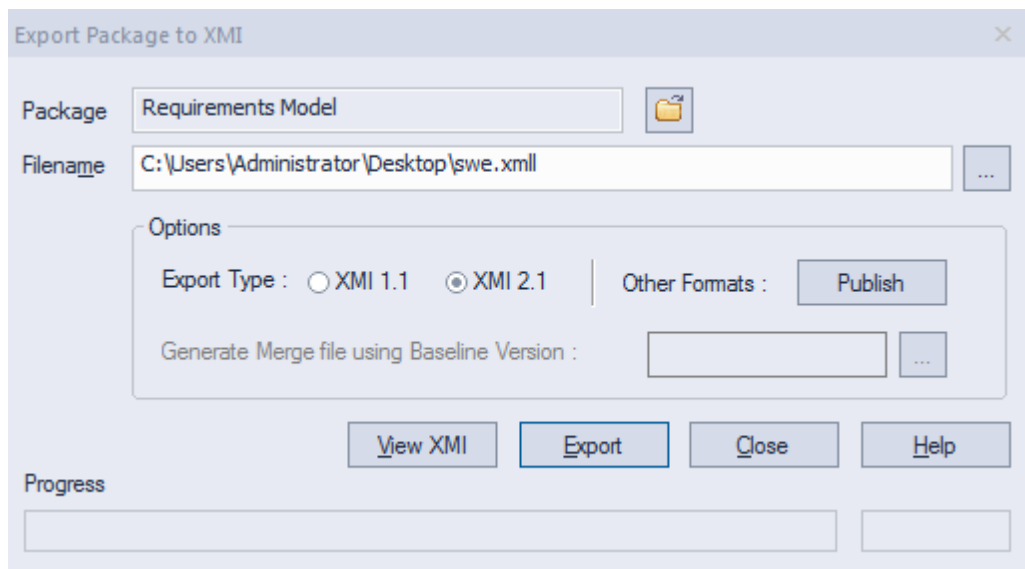


### Importing /Export Requirements

#### 1-Export in EA

To Export the Package from Enterprise Architect to XML file follow the step:

RC on **main Package** → Import/export → Export package to XMI



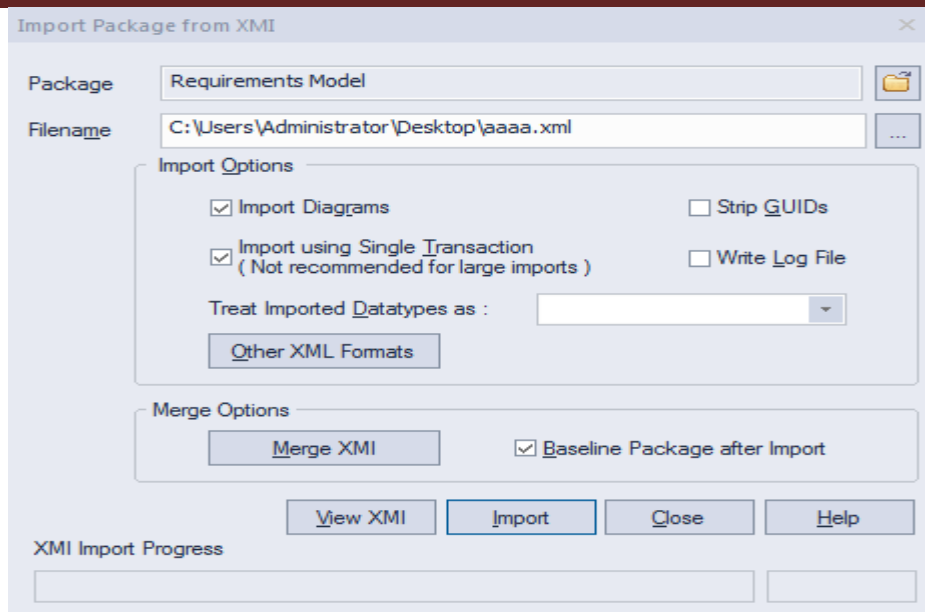
#### 2-Import in EA

Where you need to import requirements from an external source (that must be export previously) follow the step

RC on **main Package** → Import/export → Import package from XMI

# Requirements management using enterprise architect

## Rasha Ghanem Atica Mohammed - Taghreed Riyadh



## Additional Requirements Management Features

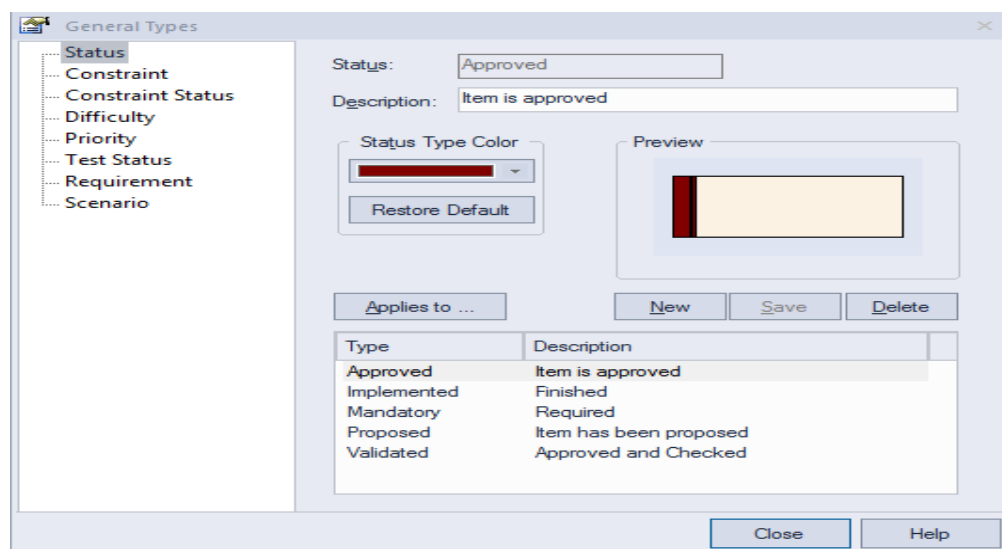
Enterprise Architect provides a number of other features for requirements management that will be covered in the following

### 1- Color Coding Requirements

External requirements may be color coded to enable quick visual cues indicating the status of a requirement. To enable color coded external requirements take the following steps:

From layout ☺appearance ☺show statues color

Check the Show Status colors on diagrams checkbox.



Must be select status of Requirements (approved, implemented, mandatory ,proposed, validated ) to appear color

## 2-Auto Element Naming

This feature allows you to configure Enterprise Architect to automatically name and number

requirements as they are created. (It can be used with almost any UML element such as use case and classes). It is particularly useful with requirements, since these are often required to have a unique reference for external checking ,To enable auto element naming, take the following steps:

1. Select Configure | Settings | Auto name and counter.
2. Change the Type to requirement.
3. Set the Prefix or Suffix. Both are optional (eg. “REQ”).
4. Type in the value for your first requirement in the Counter box (eg. “0002” or “99”).
5. Check the Active checkbox to enable the auto naming.
6. Click Save to save your changes.

The first requirement will take the value entered into the counter box and Enterprise Architect will then

increase the value by one for every new requirement (eg. “5”).

The screenshot shows the 'Auto Name Counters' dialog box. It is divided into two main sections: 'Name' and 'Alias'. The 'Name' section includes a 'Type' dropdown menu currently set to 'Requirement'. Below this are three input fields: 'Prefix' containing 'abc', 'Counter' containing '5', and 'Suffix' containing 'gg'. To the right of these fields is a checkbox labeled 'Apply on creation' which is checked. The 'Alias' section below it has three empty input fields for 'Prefix', 'Counter', and 'Suffix', and an unchecked 'Apply on creation' checkbox. On the right side of the dialog, there are three buttons: 'Save', 'Close', and 'Help'.

### **3-Drag and Drop Realizations**

A fundamental aspect of the management of requirements is the ability to trace the parts of the system that implement, or realize, a particular requirement. A quick method of generating a realization link is to drag a requirement element from the project browser over an element in a diagram, which is to be the implementing element. EA will interpret this as a request to create the realization link and do so automatically.