

Introduction to



ENTERPRISE
ARCHITECT

Department of Software

ENTERPRISE ARCHITECT

- Uml **unified modeling language** is a general purpose developmental language in the field of software engineering.

هي لغة تستخدم بشكل عام في عملية تطوير هندسة البرمجيات.

- Its intended to provide a standard way to visualize the design of the system and it's a rich language to model software solution ,application structures and business process.

تهدف هذه اللغة الى توفير طرق قياسيه لنمذجة تصاميم الانظمه من اجل توفير فهم افضل لعمليات التغيير والصيانة والتوثيق لمعلومات النظام.

وتعتبر لغة uml لغة غنية جدا في نمذجة الحلول التي يحتاجها software وهيكليه التطبيقات وكذلك في business process

Uml diagrams

- There are two main type of uml diagram:
- ✓ Structural diagram

Emphasize the static structure of the system using object ,attributes, operations and relationships it's includes class diagram, package diagram ,component diagram

المخططات من هذا النوع تؤكد على الهيكل الثابت للنظام عن طريق استخدام الكيانات و العلاقات والخصائص والعمليات

ENTERPRISE ARCHITECT

✓ Behavioral diagrams

- Emphasize the dynamic behavior of the system by showing collaboration among object and changes to the internal state of objects includes
 - sequence diagram
 - activity diagram
 - use case diagram
- المخططات من هذا النوع تؤكد على السلوك الديناميكي للنظام عن طريق اظهار التعاون بين object

هناك بعض المخططات لا توجد ضمن النوعان السابقان بل توجد ضمن

✓ Extended

- requirement diagram
- Business modeling
- User interface

ENTERPRISE ARCHITECT

UML Diagram Type

Structural Diagrams

Composite Structure
Diagram

Deployment Diagram

Package
Diagram

Profile
Diagram

Class
Diagram

Object Diagram

Component Diagram

Behavioral Diagrams

Activity Diagram

Use Case Diagram

State Machine
Diagram

Interaction Diagram

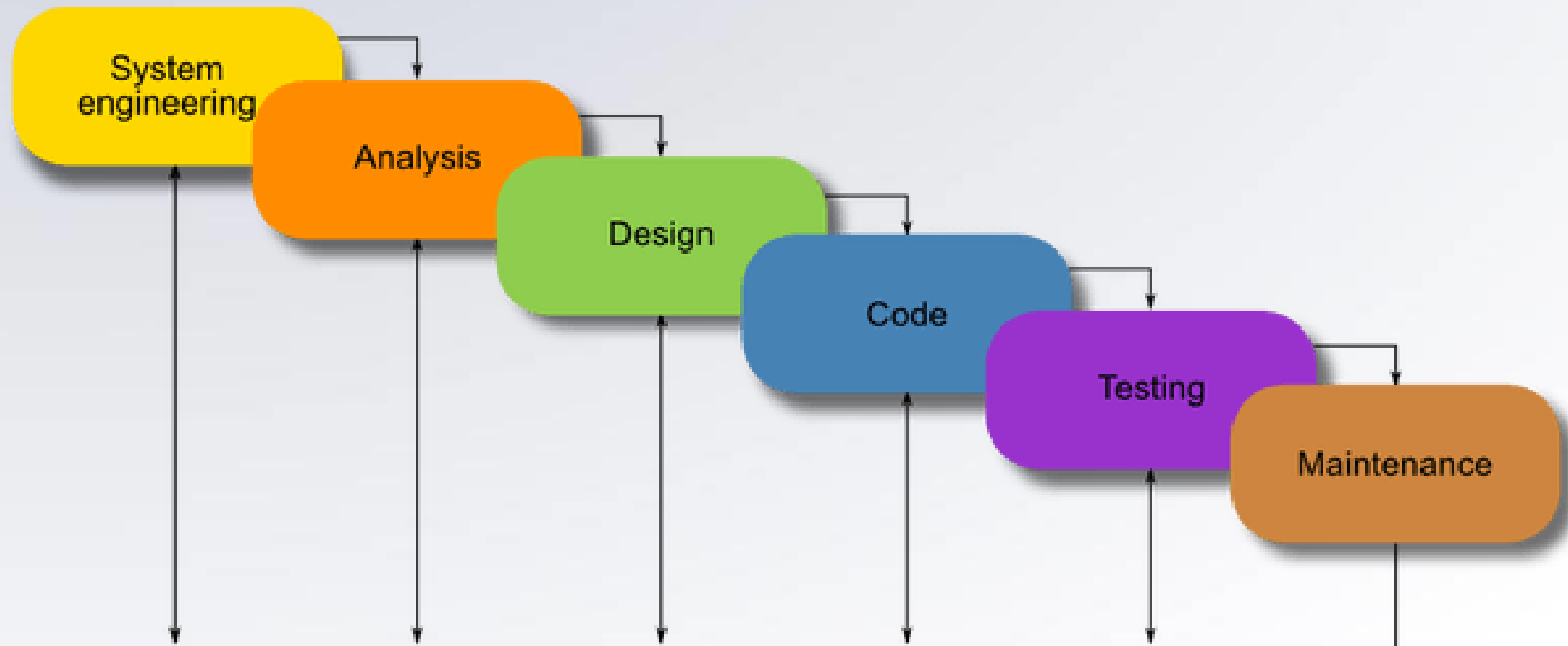
Sequence Diagram

Communication
Diagram

Interaction Overview
Diagram

Timing Diagram

Software process model



What Is Enterprise Architect?

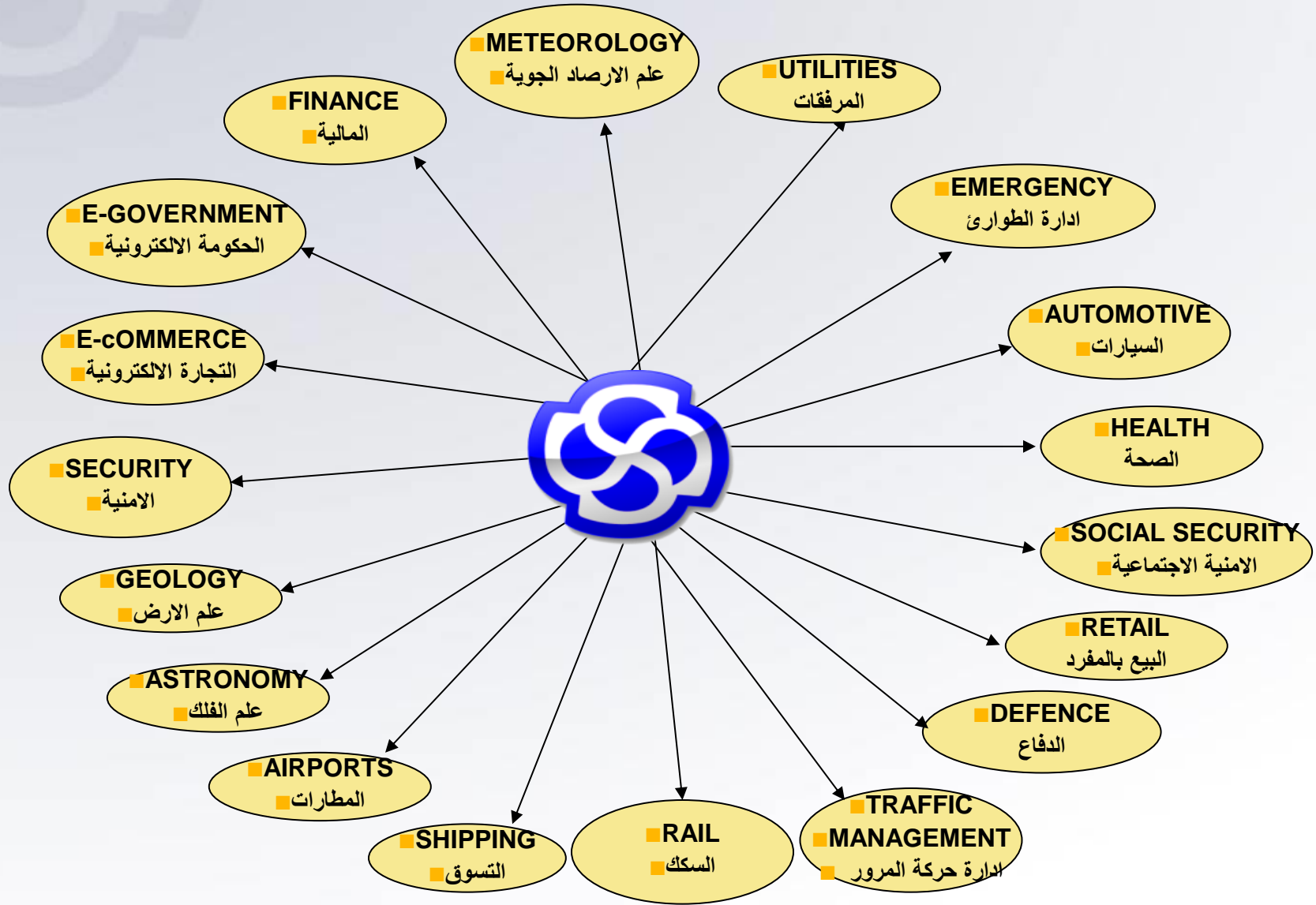
- A visual modeling and design tool based on the Object Management Group OMG UML.
- أداة تصميم وتكوين نماذج مرئية
- The platform supports: the design and construction of software systems; modeling business processes; and modeling industry based domains.
- تدعم المنصة: تصميم وبناء أنظمة البرمجيات ؛ نمذجة العمليات التجارية ؛ ونمذجة المجالات القائمة على الصناعة

- It is used by businesses and organizations to not only model the architecture of their systems, but to process the implementation of these models across the full application development life-cycle.

● يتم استخدامه من قبل الشركات والمؤسسات ليس فقط لنمذجة بنية أنظمتها ، ولكن لمعالجة تنفيذ هذه النماذج عبر دورة حياة تطوير التطبيقات الكاملة.

ENTERPRISE ARCHITECT

Enterprise consider as
Solution for Every World

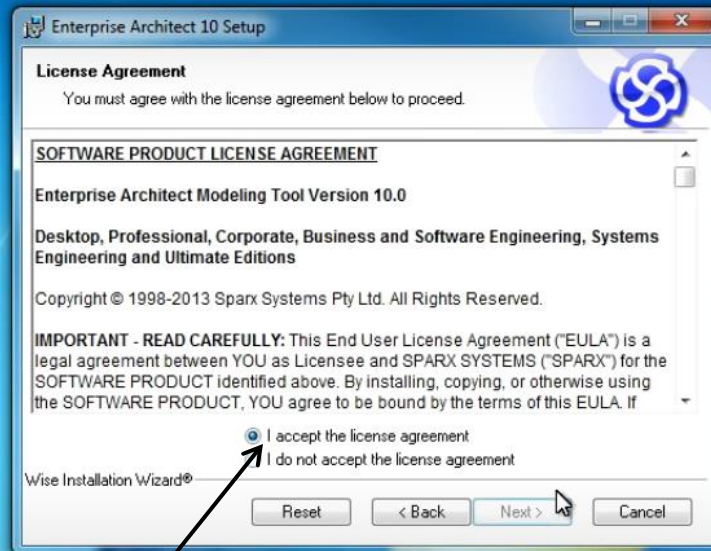


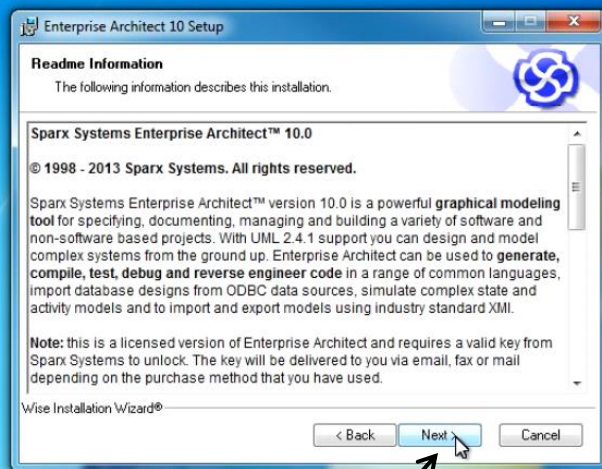
Enterprise diagrams

- Requirement diagram.
- Use case diagram.
- Activity diagram.
- Sequence diagram.
- Class diagram.
- User interface diagram.
- Communication diagram.

طريقة تنصيب البرنامج









Enterprise Architect 10 Setup

User Information

Enter the following information to personalize your installation.

Full Name:

Organization:

The settings for this application can be installed for the current user or for all users that share this computer. You must have administrator rights to install the settings for all users. Install this application for:

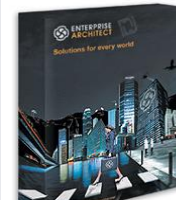
☒ Anyone who uses this computer

☐ Only for me (user)

Wise Installation Wizard®

< Back Next > Cancel

ENTERPRISE ARCHITECT



Enterprise
Architect
www.p30download.com

No current project - EA Academic

File Edit View Project Diagram Element Tools Add-Ins Settings Window Help

<default>

Toolbox

Custom

- Package
- Requirement
- Issue
- Change
- Screen
- UI Control
- Test Case
- Entity

Rule Flow Relationships

Control Flow

Common

Enterprise Architect Version 7.5

Search:

Getting Started
Online Resources & Tutorials
Configure Options...

Manage Projects

- Open a Project File...
- Create a New Project...
- Copy a Base Project...
- Connect to Server...

Recent

- swe2
- swe1
- متن
- req1
- req
- class
- user

شريط القوائم

مستعرض المخطط

شريط الأدوات

الأدوات والعلاقات الخاصة بالمخطط

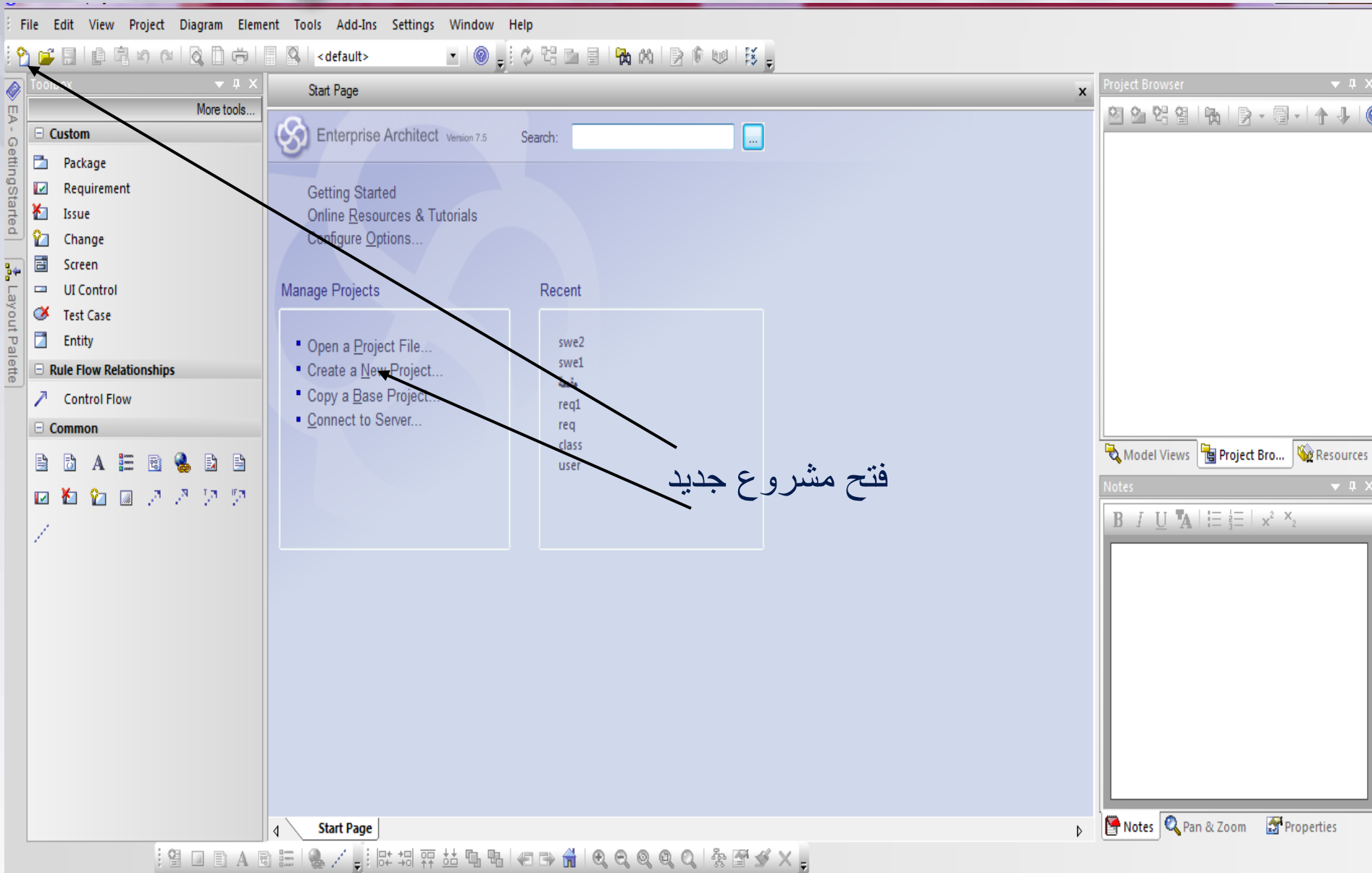
Project Browser

Model Views Project Bro... Resources

Notes

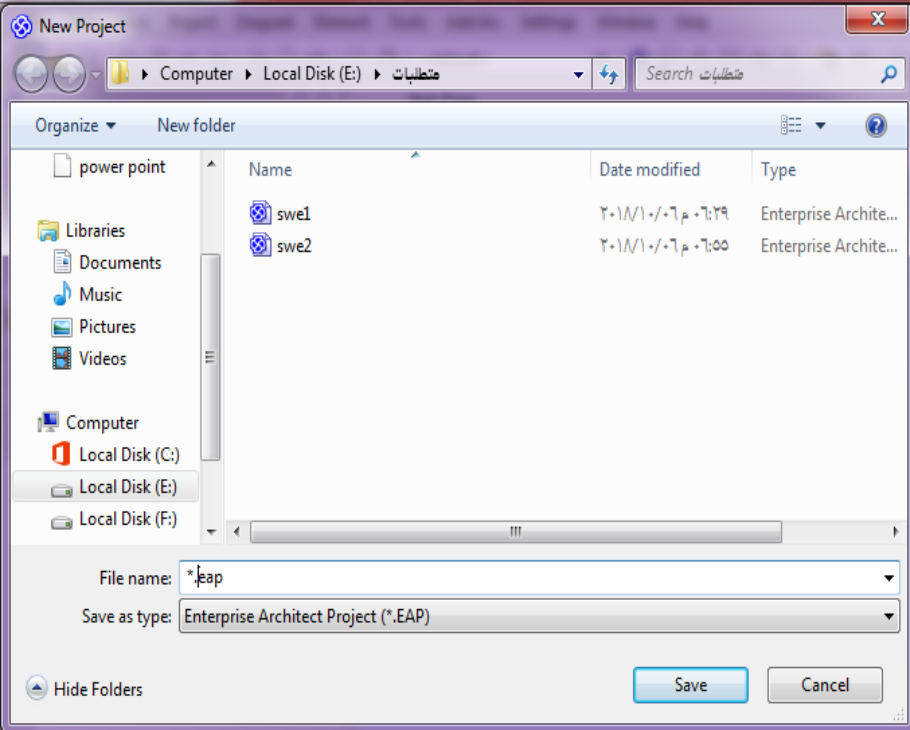
Notes Pan & Zoom Properties

ENTERPRISE ARCHITECT



ENTERPRISE ARCHITECT

No current project - EA Academic



إعطاء اسم للمشروع



ENTERPRISE ARCHITECT

1 - EA Academic

File Edit View Project Diagram Element Tools Add-Ins Settings Window Help



Toolbox

EA - Getting Started

Layout Palette

Requirements

Package

Requirement

Feature

Object

Requirements Relationships

Custom

Package

Requirement

Issue

Change

Screen

UI Control

Test Case

Entity

Rule Flow Relationships

Control Flow

Common

Package

Requirement

Issue

Change

Screen

UI Control

Test Case

Entity

Rule Flow Relationships

Control Flow

Common

Package

Requirement

Issue

Change

Screen

UI Control

Test Case

Entity

Requirements Diagram: "Use Case Model" created: 07/10/2018 08:58:42 modified: 07/10/2018 09:06:46 x 1146

- Add Diagram... Ctrl+M
- Add Element... Ctrl+W
- Add Package...
- Add a New Model using Wizard...

Project Browser

Model

Use Case Model

Properties...

Package Control

Add

Linked Document... Ctrl+Alt+D

Documentation

Code Engineering

Build and Run

Import/Export

Transform Current Package Ctrl+Shift+H

Show Level Numbering

Show Element List

Contents

Bookmarks

Find In Project Browser... Ctrl+Shift+F

Copy Reference

Save Package as UML Profile

Set View Icon...

Move up

Move down

Delete 'Use Case Model'

Help...

Aggregation

Use Case Model

CAP NUM SCRL WAN



ENTERPRISE ARCHITECT

1 - EA Academic

File Edit View Project Diagram Element Tools Add-Ins Settings Window Help



Toolbox

More tools...

Requirements

Package

Requirement

Feature

Object

Requirements Relationships

Custom

Package

Requirement

Issue

Change

Screen

UI Control

Test Case

Entity

Rule Flow Relationships

Control Flow

Common

Package

Requirement

Issue

Change

Screen

UI Control

Test Case

Entity

Rule Flow Relationships

Control Flow

Common

Package

Requirement

Issue

Change

Screen

UI Control

Test Case

Entity

Rule Flow Relationships

Control Flow

Common

Requirements Diagram: "Use Case Model" created: 07/10/2018 08:58:42 modified: 07/10/2018 09:06:46 A.T. %100 x 1146

New Diagram

Name: Use Case Model Auto

Type

Select From:

- UML Structural
- UML Behavioral
- Extended
- Archimate
- BPMN 1.0
- BPMN 1.1
- Data Flow Diagrams
- MindMapping
- SOMF
- SPEM
- Strategic Modeling
- Web Modeling

Diagram Types:

- Custom
- Requirements
- Maintenance
- Analysis
- User Interface
- Data Modeling
- Documentation
- Business Modeling

Requirements Diagrams are used to describe a system's requirements or features as a visual model.

OK Cancel Help

Project Browser

Model

Use Case Model

Model Views

Project Bro...

Resources

Notes

B I U A

Notes

Pan & Zoom

Properties

Aggregation

Use Case Model

CAP NUM SCRL WAN



ENTERPRISE ARCHITECT

1 - EA Academic

File Edit View Project Diagram Element Tools Add-Ins Settings Window Help

Toolbox

- Requirements
 - Package
 - Requirement
 - Feature
 - Object
- Requirements Relationships
 - Control Flow
- Custom
 - Package
 - Requirement
 - Issue
 - Change
 - Screen
 - UI Control
 - Test Case
 - Entity
- Rule Flow Relationships
 - Control Flow
- Common

Requirements Diagram: "Use Case Model" created: 07/10/2018 08:58:42 modified: 07/10/2018 09:06:46 x 1146

Project Browser

- Model
 - Use Case Model
 - Use Case Model
 - Actors
 - Primary Use Cases
 - Primary Use Cases
 - Use Case1
 - Use Case1
 - Object1
 - Use Case2
 - Requirement1
 - Requirement2

Model Views Project Bro... Resources

Notes

Start Page *Use Case Model

Aggregation Use Case Model

09:26 2018/10/10



Thank You