



Lecture title: Digestive System / Practical lecture of the stomach

Lecturer Affiliation: *Dr. Saffanah Khuder Mahmood, BVMS, MSc, PhD Scientific degree (Assistant Prof. Dr.), Department of Anatomy, College of Veterinary Medicine, University of Mosul, Mosul, Iraq*

<https://orcid.org/0000-0003-0687-7762>

https://www.researchgate.net/profile/Saffanah_Mahmood3

The stomach

-Stomach of horse:

1-Surfaces:

- a-Parietal surface.
- b-Visceral surface.

2-Curvatures:

- a-Lesser curvature.
- b-Greater curvature.

3-Openings:

- a-Cardiac opening: controlled by cardiac sphincter.
- b-Pyloric opening: controlled by pyloric sphincter.



4-Saccus cecus (blind sac).

5-Margoplicatus.

6-Gastric mucosa:

a-Glandular mucosa.

b-Non glandular mucosa.

-Fixation of the stomach:

1-Gastrophrenic ligament.

2-Gastrosplenic ligament.

3-Gastropancreatic ligament.

4-Greater omentum.

5-Lesser omentum.

-Stomach of dog:

It has the same structure of horse stomach except:

a=Stomach of dog doesn't have saccus cecus (blind sac).

b=Stomach of dog doesn't have margoplicatus (because mucosa completely glandular).

-Stomach of ruminants:

Includes rumen, reticulum, omasum & abomasum.

1=Rumen:

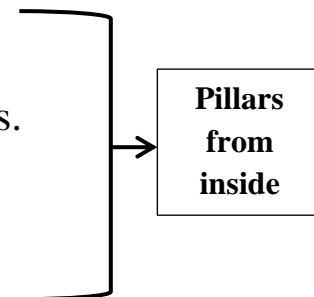


1-Description of the rumen: it has:

- Two openings: esophageal opening & ruminoreticular opening.
- Two curvatures: dorsal curvature & ventral curvature.
- Two surfaces: parietal surface & visceral surface.

2-Ruminal grooves are:

- a-Right & left ruminal longitudinal groove.
- b-Cranial & caudal transverse ruminal grooves.
- c-Dorsal & ventral coronary grooves.
- d-Right & left accessory grooves.



3- Ruminal parts:

- a-Dorsal & ventral ruminal sac.
- b-Caudodorsal & caudoventral blind sac.
- c-Cranial ruminal sac.
- d-Ruminal recess.
- e-Insula rumini (ruminal island).

2=Reticulum.

3=Omasum.

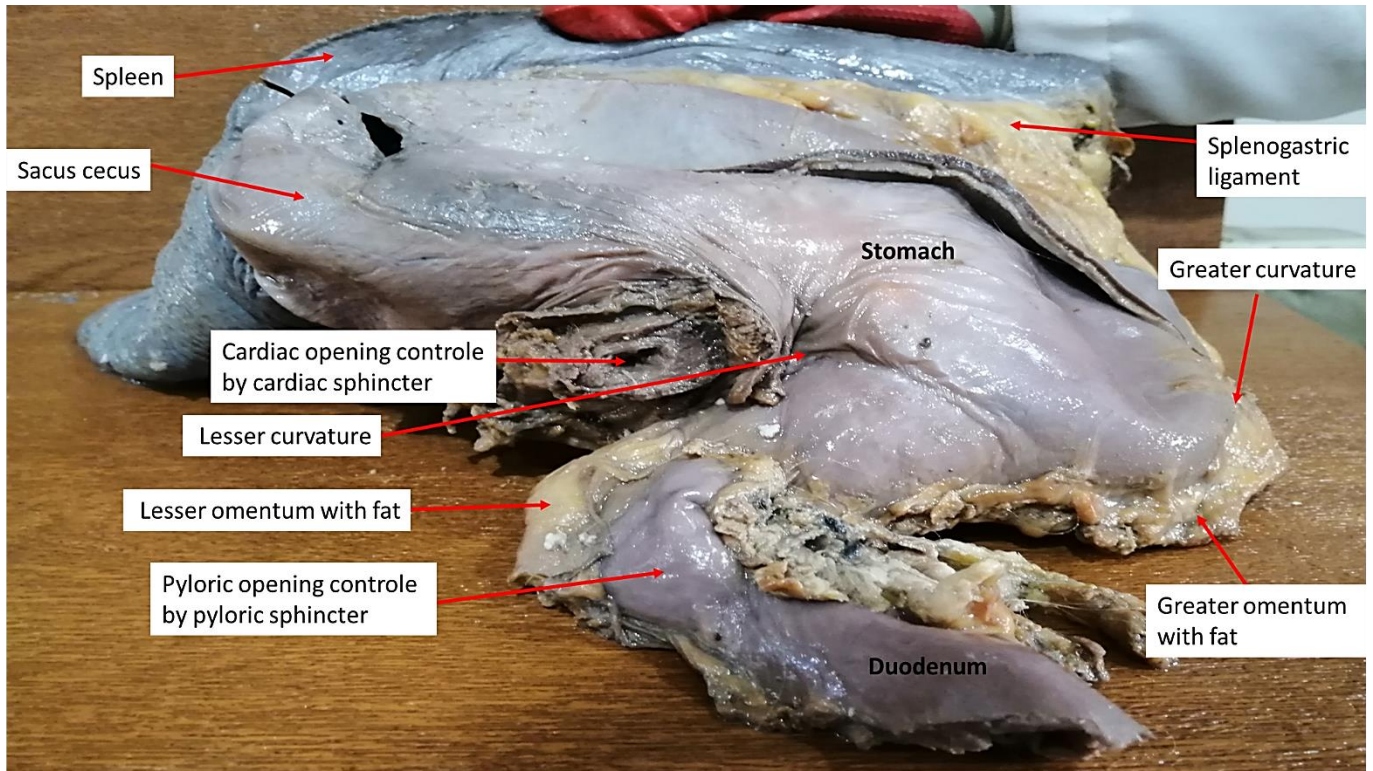
- Vela abomasica.

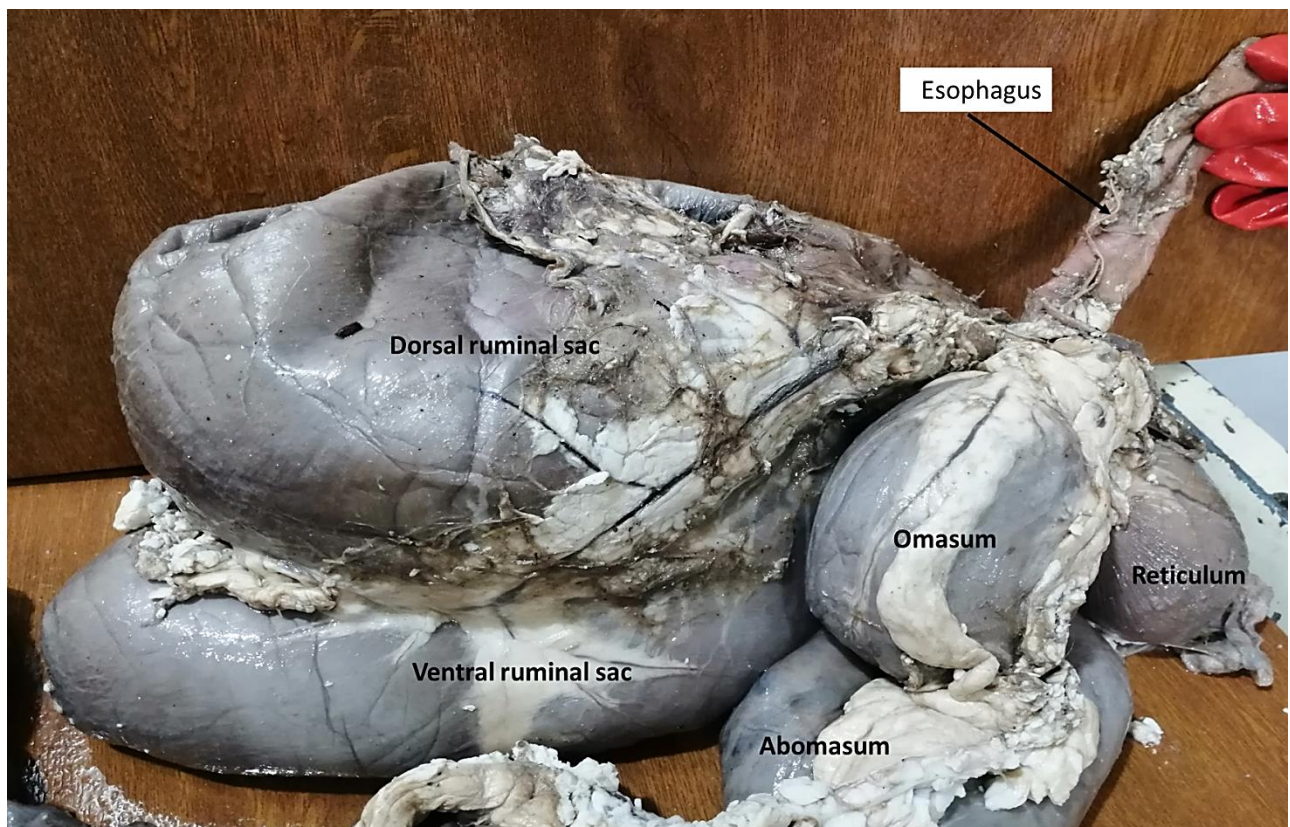
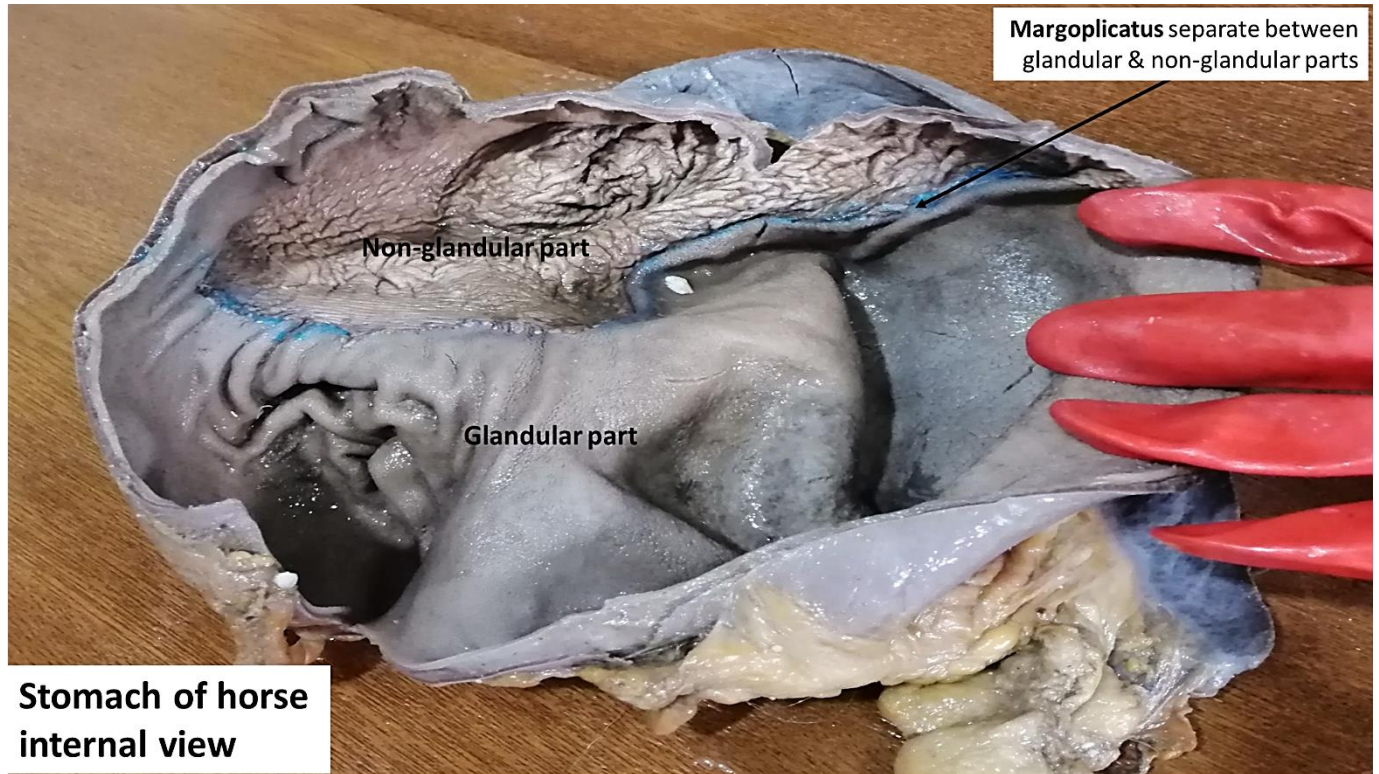
4=Abomasum.

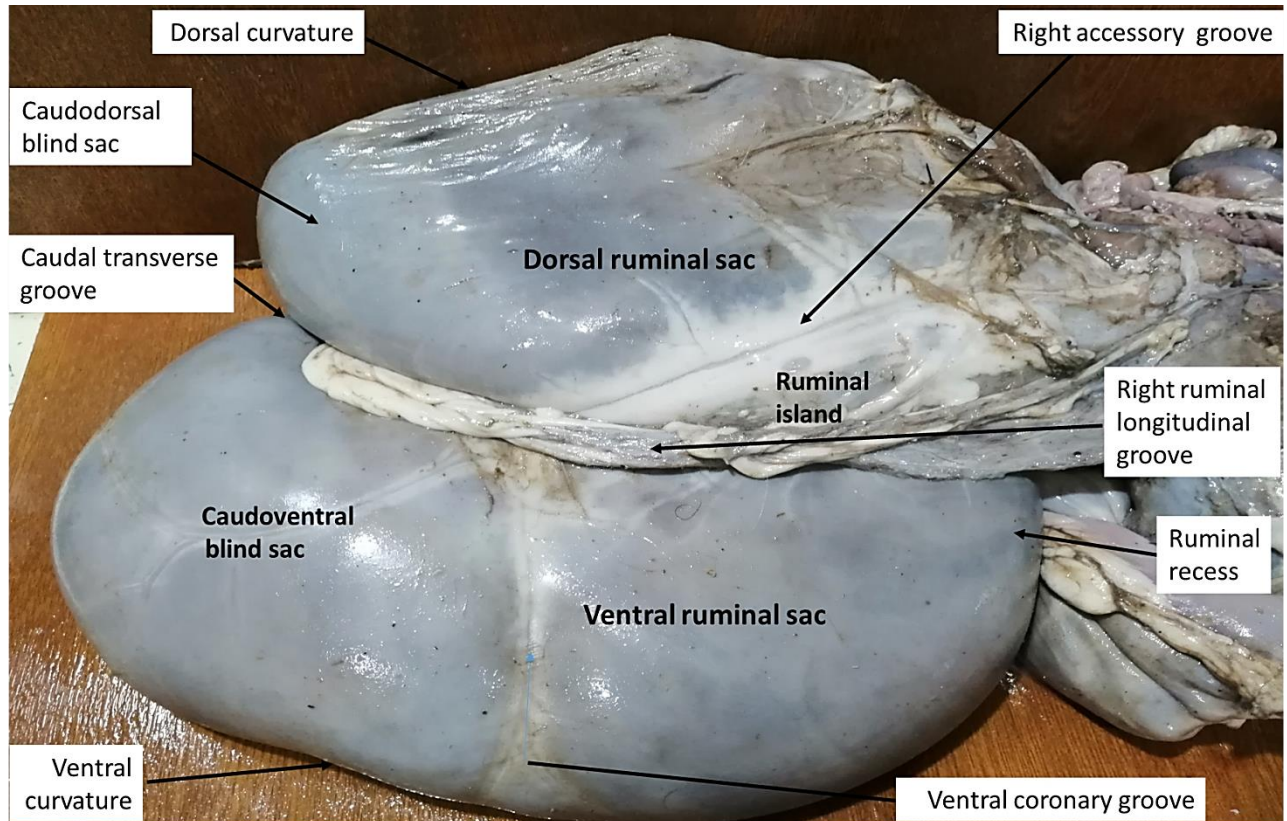
- Torus pyloricus.
- Lesser omentum.



- Greater omentum.
- Gastric groove.







Rumen / Left side

