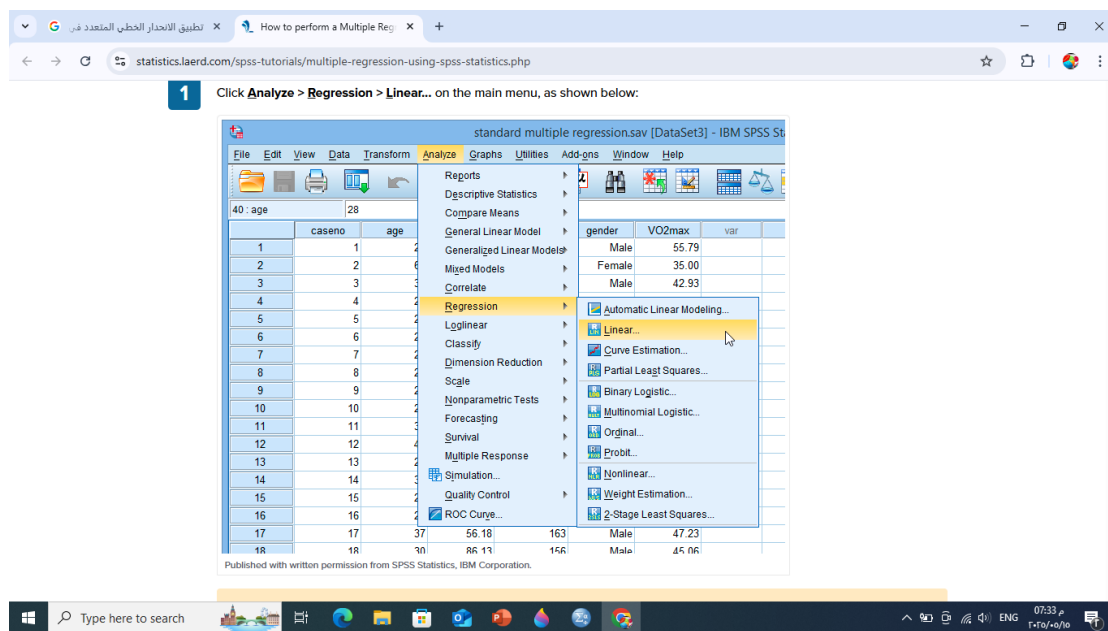


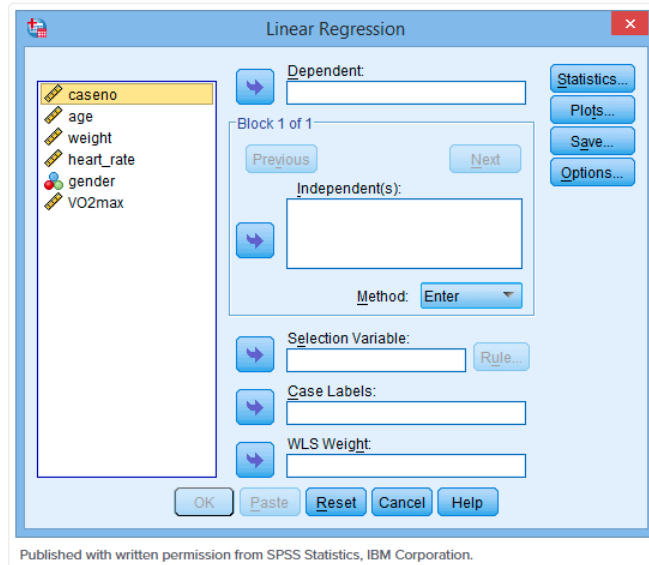
بعد ادخال البيانات يتم اختيار

Analyze → Regression → Linear

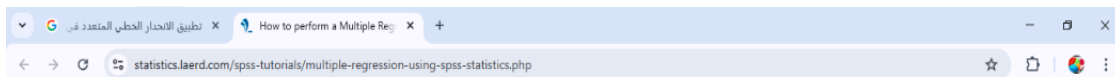


ثم يظهر مربع الحوار التالي

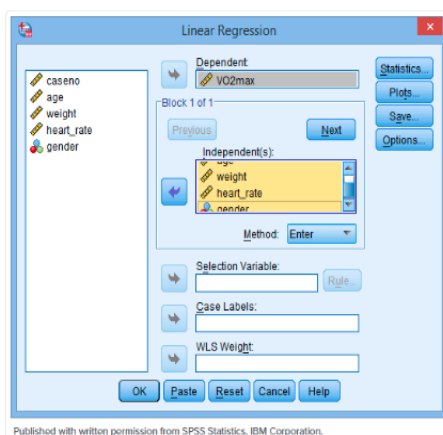
2 You will be presented with the **Linear Regression** dialogue box below:



نقوم بإدخال المتغير المعتمد في الأعلى Dependent ثم المتغيرات المستقلة Independent

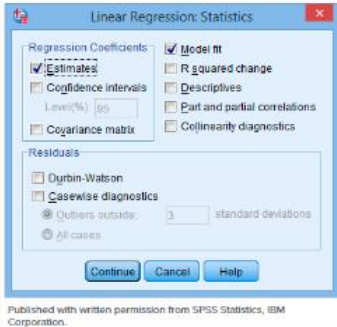


3 Transfer the dependent variable, **VO₂max**, into the **Dependent** box and the independent variables, **age**, **weight**, **heart_rate** and **gender** into the **Independent(s)** box, using the buttons, as shown below (all other boxes can be ignored):



the name given by SPSS Statistics to standard regression analysis.

4 Click on the **Statistics...** button. You will be presented with the **Linear Regression: Statistics** dialogue box, as shown below:

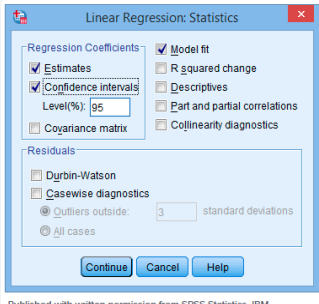


Published with written permission from SPSS Statistics, IBM Corporation.

ثم نضغط على كلمة **Statistic** ونختار

Published with written permission from SPSS Statistics, IBM Corporation.

5 In addition to the options that are selected by default, select ☒ **Confidence intervals** in the **Regression Coefficients** area leaving the **Level (%)** option at "95". You will end up with the following screen:



Published with written permission from SPSS Statistics, IBM Corporation.

6 Click on the **Continue** button. You will be returned to the **Linear Regression** dialogue box.

7 Click on the **OK** button. This will generate the output.

