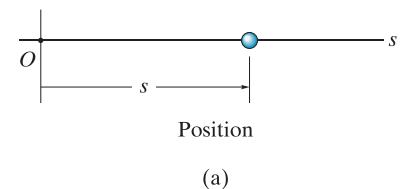


## 12.2 Rectilinear Kinematics: Continuous Motion

We will begin our study of dynamics by discussing the kinematics of a particle that moves along a rectilinear or straight-line path. Recall that a *particle* has a mass but negligible size and shape. Therefore we must limit application to those objects that have dimensions that are of no consequence in the analysis of the motion. In most problems, we will be interested in bodies of finite size, such as rockets, projectiles, or vehicles. Each of these objects can be considered as a particle, as long as the motion is characterized by the motion of its mass center and any rotation of the body is neglected.

**Rectilinear Kinematics.** The kinematics of a particle is characterized by specifying, at any given instant, the particle's position, velocity, and acceleration.

**Position.** The straight-line path of a particle will be defined using a single coordinate axis  $s$ , Fig. 12-1a. The origin  $O$  on the path is a fixed point, and from this point the **position coordinate**  $s$  is used to specify the location of the particle at any given instant. The magnitude of  $s$  is the distance from  $O$  to the particle, usually measured in meters (m) or feet (ft), and the sense of direction is defined by the algebraic sign on  $s$ . Although the choice is arbitrary, in this case  $s$  is positive since the coordinate axis is positive to the right of the origin. Likewise, it is negative if the particle is located to the left of  $O$ . Realize that *position is a vector quantity* since it has both magnitude and direction. Here, however, it is being represented by the algebraic scalar  $s$ , rather than in boldface  $\mathbf{s}$ , since the direction always remains along the coordinate axis.



**Displacement.** The **displacement** of the particle is defined as the *change in its position*. For example, if the particle moves from one point to another, Fig. 12-1b, the displacement is

$$\Delta s = s' - s$$

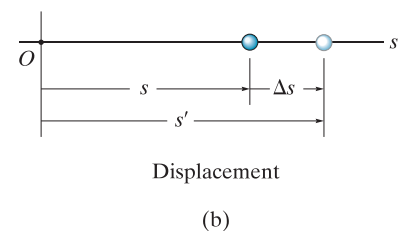


Fig. 12-1

In this case  $\Delta s$  is *positive* since the particle's final position is to the *right* of its initial position, i.e.,  $s' > s$ . Likewise, if the final position were to the *left* of its initial position,  $\Delta s$  would be *negative*.

The displacement of a particle is also a *vector quantity*, and it should be distinguished from the distance the particle travels. Specifically, the *distance traveled* is a *positive scalar* that represents the total length of path over which the particle travels.

**Velocity.** If the particle moves through a displacement  $\Delta s$  during the time interval  $\Delta t$ , the **average velocity** of the particle during this time interval is

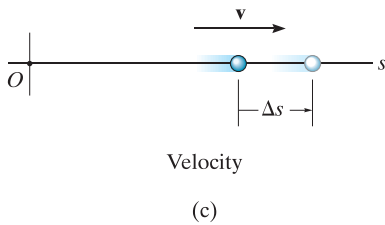
$$v_{\text{avg}} = \frac{\Delta s}{\Delta t}$$

If we take smaller and smaller values of  $\Delta t$ , the magnitude of  $\Delta s$  becomes smaller and smaller. Consequently, the **instantaneous velocity** is a vector defined as  $v = \lim_{\Delta t \rightarrow 0} (\Delta s / \Delta t)$ , or

( $\pm$ )

$$v = \frac{ds}{dt}$$

(12-1)

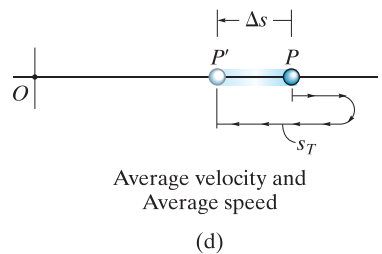


Since  $\Delta t$  or  $dt$  is always positive, the sign used to define the *sense* of the velocity is the same as that of  $\Delta s$  or  $ds$ . For example, if the particle is moving to the *right*, Fig. 12-1c, the velocity is *positive*; whereas if it is moving to the *left*, the velocity is *negative*. (This is emphasized here by the arrow written at the left of Eq. 12-1.) The *magnitude* of the velocity is known as the **speed**, and it is generally expressed in units of m/s or ft/s.

Occasionally, the term “average speed” is used. The **average speed** is always a positive scalar and is defined as the total distance traveled by a particle,  $s_T$ , divided by the elapsed time  $\Delta t$ ; i.e.,

$$(v_{\text{sp}})_{\text{avg}} = \frac{s_T}{\Delta t}$$

For example, the particle in Fig. 12-1d travels along the path of length  $s_T$  in time  $\Delta t$ , so its average speed is  $(v_{\text{sp}})_{\text{avg}} = s_T / \Delta t$ , but its average velocity is  $v_{\text{avg}} = -\Delta s / \Delta t$ .



**Fig. 12-1 (cont.)**

**Acceleration.** Provided the velocity of the particle is known at two points, the **average acceleration** of the particle during the time interval  $\Delta t$  is defined as

$$a_{\text{avg}} = \frac{\Delta v}{\Delta t}$$

Here  $\Delta v$  represents the difference in the velocity during the time interval  $\Delta t$ , i.e.,  $\Delta v = v' - v$ , Fig. 12-1e.

The **instantaneous acceleration** at time  $t$  is a **vector** that is found by taking smaller and smaller values of  $\Delta t$  and corresponding smaller and smaller values of  $\Delta v$ , so that  $a = \lim_{\Delta t \rightarrow 0} (\Delta v / \Delta t)$ , or

$$(\pm) \quad \boxed{a = \frac{dv}{dt}} \quad (12-2)$$

Substituting Eq. 12-1 into this result, we can also write

$$(\pm) \quad a = \frac{d^2s}{dt^2}$$

Both the average and instantaneous acceleration can be either positive or negative. In particular, when the particle is *slowing down*, or its speed is decreasing, the particle is said to be **decelerating**. In this case,  $v'$  in Fig. 12-1f is *less* than  $v$ , and so  $\Delta v = v' - v$  will be negative. Consequently,  $a$  will also be negative, and therefore it will act to the *left*, in the *opposite sense* to  $v$ . Also, notice that if the particle is originally at rest, then it can have an acceleration if a moment later it has a velocity  $v'$ ; and, if the *velocity* is *constant*, then the *acceleration is zero* since  $\Delta v = v - v = 0$ . Units commonly used to express the magnitude of acceleration are  $\text{m/s}^2$  or  $\text{ft/s}^2$ .

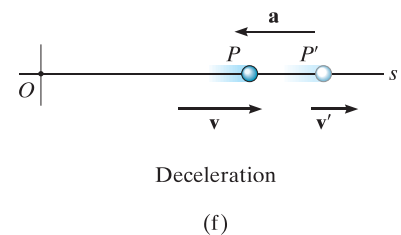
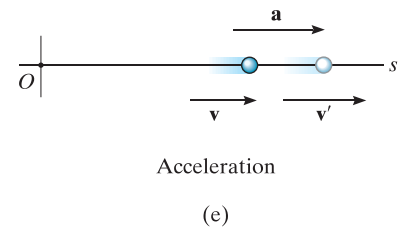
Finally, an important differential relation involving the displacement, velocity, and acceleration along the path may be obtained by eliminating the time differential  $dt$  between Eqs. 12-1 and 12-2. We have

$$dt = \frac{ds}{v} = \frac{dv}{a}$$

or

$$(\pm) \quad \boxed{a ds = v dv} \quad (12-3)$$

Although we have now produced three important kinematic equations, realize that the above equation is not independent of Eqs. 12-1 and 12-2.



**Fig. 12-1 (cont.)**



When the ball is released, it has zero velocity but an acceleration of  $9.81 \text{ m/s}^2$ .  
(© R.C. Hibbeler)

**Constant Acceleration,  $a = a_c$ .** When the acceleration is constant, each of the three kinematic equations  $a_c = dv/dt$ ,  $v = ds/dt$ , and  $a_c ds = v dv$  can be integrated to obtain formulas that relate  $a_c$ ,  $v$ ,  $s$ , and  $t$ .

**Velocity as a Function of Time.** Integrate  $a_c = dv/dt$ , assuming that initially  $v = v_0$  when  $t = 0$ .

$$\int_{v_0}^v dv = \int_0^t a_c dt$$

$$v = v_0 + a_c t \quad (12-4)$$

Constant Acceleration

**Position as a Function of Time.** Integrate  $v = ds/dt = v_0 + a_c t$ , assuming that initially  $s = s_0$  when  $t = 0$ .

$$\int_{s_0}^s ds = \int_0^t (v_0 + a_c t) dt$$

$$s = s_0 + v_0 t + \frac{1}{2} a_c t^2 \quad (12-5)$$

Constant Acceleration

**Velocity as a Function of Position.** Either solve for  $t$  in Eq. 12-4 and substitute into Eq. 12-5, or integrate  $v dv = a_c ds$ , assuming that initially  $v = v_0$  at  $s = s_0$ .

$$\int_{v_0}^v v dv = \int_{s_0}^s a_c ds$$

$$v^2 = v_0^2 + 2a_c(s - s_0) \quad (12-6)$$

Constant Acceleration

The algebraic signs of  $s_0$ ,  $v_0$ , and  $a_c$ , used in the above three equations, are determined from the positive direction of the  $s$  axis as indicated by the arrow written at the left of each equation. Remember that these equations are useful *only when the acceleration is constant and when*  $t = 0$ ,  $s = s_0$ ,  $v = v_0$ . A typical example of constant accelerated motion occurs when a body falls freely toward the earth. If air resistance is neglected and the distance of fall is short, then the *downward* acceleration of the body when it is close to the earth is constant and approximately  $9.81 \text{ m/s}^2$  or  $32.2 \text{ ft/s}^2$ . The proof of this is given in Example 13.2.

## Important Points

- Dynamics is concerned with bodies that have accelerated motion.
- Kinematics is a study of the geometry of the motion.
- Kinetics is a study of the forces that cause the motion.
- Rectilinear kinematics refers to straight-line motion.
- Speed refers to the magnitude of velocity.
- Average speed is the total distance traveled divided by the total time. This is different from the average velocity, which is the displacement divided by the time.
- A particle that is slowing down is decelerating.
- A particle can have an acceleration and yet have zero velocity.
- The relationship  $a ds = v dv$  is derived from  $a = dv/dt$  and  $v = ds/dt$ , by eliminating  $dt$ .



During the time this rocket undergoes rectilinear motion, its altitude as a function of time can be measured and expressed as  $s = s(t)$ . Its velocity can then be found using  $v = ds/dt$ , and its acceleration can be determined from  $a = dv/dt$ . (© NASA)

## Procedure for Analysis

### Coordinate System.

- Establish a position coordinate  $s$  along the path and specify its *fixed origin* and positive direction.
- Since motion is along a straight line, the vector quantities position, velocity, and acceleration can be represented as algebraic scalars. For analytical work the sense of  $s$ ,  $v$ , and  $a$  is then defined by their *algebraic signs*.
- The positive sense for each of these scalars can be indicated by an arrow shown alongside each kinematic equation as it is applied.

### Kinematic Equations.

- If a relation is known between any *two* of the four variables  $a$ ,  $v$ ,  $s$ , and  $t$ , then a third variable can be obtained by using one of the kinematic equations,  $a = dv/dt$ ,  $v = ds/dt$  or  $a ds = v dv$ , since each equation relates all three variables.\*
- Whenever integration is performed, it is important that the position and velocity be known at a given instant in order to evaluate either the constant of integration if an indefinite integral is used, or the limits of integration if a definite integral is used.
- Remember that Eqs. 12–4 through 12–6 have only limited use. These equations apply *only* when the *acceleration is constant* and the initial conditions are  $s = s_0$  and  $v = v_0$  when  $t = 0$ .

\*Some standard differentiation and integration formulas are given in Appendix A.

## EXAMPLE 12.1



(© R.C. Hibbeler)

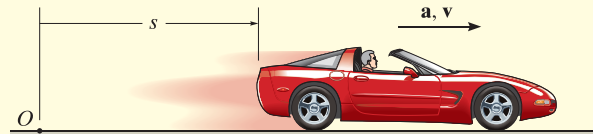


Fig. 12–2

The car on the left in the photo and in Fig. 12–2 moves in a straight line such that for a short time its velocity is defined by  $v = (3t^2 + 2t)$  ft/s, where  $t$  is in seconds. Determine its position and acceleration when  $t = 3$  s. When  $t = 0$ ,  $s = 0$ .

**SOLUTION**

**Coordinate System.** The position coordinate extends from the fixed origin  $O$  to the car, positive to the right.

**Position.** Since  $v = f(t)$ , the car's position can be determined from  $v = ds/dt$ , since this equation relates  $v$ ,  $s$ , and  $t$ . Noting that  $s = 0$  when  $t = 0$ , we have\*

$$\begin{aligned} (\pm) \quad v &= \frac{ds}{dt} = (3t^2 + 2t) \\ \int_0^s ds &= \int_0^t (3t^2 + 2t) dt \\ s \Big|_0^s &= t^3 + t^2 \Big|_0^t \\ s &= t^3 + t^2 \end{aligned}$$

When  $t = 3$  s,

$$s = (3)^3 + (3)^2 = 36 \text{ ft} \quad \text{Ans.}$$

**Acceleration.** Since  $v = f(t)$ , the acceleration is determined from  $a = dv/dt$ , since this equation relates  $a$ ,  $v$ , and  $t$ .

$$\begin{aligned} (\pm) \quad a &= \frac{dv}{dt} = \frac{d}{dt}(3t^2 + 2t) \\ &= 6t + 2 \end{aligned}$$

When  $t = 3$  s,

$$a = 6(3) + 2 = 20 \text{ ft/s}^2 \rightarrow \quad \text{Ans.}$$

**NOTE:** The formulas for constant acceleration *cannot* be used to solve this problem, because the acceleration is a function of time.

\*The *same result* can be obtained by evaluating a constant of integration  $C$  rather than using definite limits on the integral. For example, integrating  $ds = (3t^2 + 2t)dt$  yields  $s = t^3 + t^2 + C$ . Using the condition that at  $t = 0$ ,  $s = 0$ , then  $C = 0$ .

**EXAMPLE 12.2**

A small projectile is fired vertically *downward* into a fluid medium with an initial velocity of 60 m/s. Due to the drag resistance of the fluid the projectile experiences a deceleration of  $a = (-0.4v^3)$  m/s<sup>2</sup>, where  $v$  is in m/s. Determine the projectile's velocity and position 4 s after it is fired.

**SOLUTION**

**Coordinate System.** Since the motion is downward, the position coordinate is positive downward, with origin located at  $O$ , Fig. 12-3.

**Velocity.** Here  $a = f(v)$  and so we must determine the velocity as a function of time using  $a = dv/dt$ , since this equation relates  $v$ ,  $a$ , and  $t$ . (Why not use  $v = v_0 + a_c t$ ?) Separating the variables and integrating, with  $v_0 = 60$  m/s when  $t = 0$ , yields

$$\begin{aligned}
 (+\downarrow) \quad a &= \frac{dv}{dt} = -0.4v^3 \\
 \int_{60 \text{ m/s}}^v \frac{dv}{-0.4v^3} &= \int_0^t dt \\
 \frac{1}{-0.4} \left( \frac{1}{-2} \right) \frac{1}{v^2} \Big|_{60}^v &= t - 0 \\
 \frac{1}{0.8} \left[ \frac{1}{v^2} - \frac{1}{(60)^2} \right] &= t \\
 v &= \left\{ \left[ \frac{1}{(60)^2} + 0.8t \right]^{-1/2} \right\} \text{ m/s}
 \end{aligned}$$

Here the positive root is taken, since the projectile will continue to move downward. When  $t = 4$  s,

$$v = 0.559 \text{ m/s} \downarrow \quad \text{Ans.}$$

**Position.** Knowing  $v = f(t)$ , we can obtain the projectile's position from  $v = ds/dt$ , since this equation relates  $s$ ,  $v$ , and  $t$ . Using the initial condition  $s = 0$ , when  $t = 0$ , we have

$$\begin{aligned}
 (+\downarrow) \quad v &= \frac{ds}{dt} = \left[ \frac{1}{(60)^2} + 0.8t \right]^{-1/2} \\
 \int_0^s ds &= \int_0^t \left[ \frac{1}{(60)^2} + 0.8t \right]^{-1/2} dt \\
 s &= \frac{2}{0.8} \left[ \frac{1}{(60)^2} + 0.8t \right]^{1/2} \Big|_0^t \\
 s &= \frac{1}{0.4} \left\{ \left[ \frac{1}{(60)^2} + 0.8t \right]^{1/2} - \frac{1}{60} \right\} \text{ m}
 \end{aligned}$$

When  $t = 4$  s,

$$s = 4.43 \text{ m} \quad \text{Ans.}$$

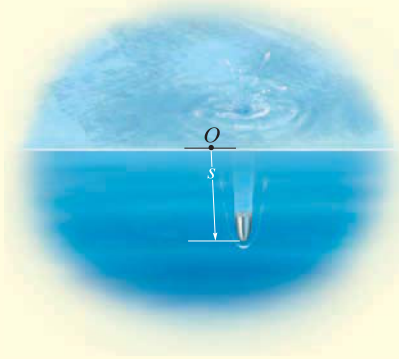


Fig. 12-3

## EXAMPLE 12.3

During a test a rocket travels upward at 75 m/s, and when it is 40 m from the ground its engine fails. Determine the maximum height  $s_B$  reached by the rocket and its speed just before it hits the ground. While in motion the rocket is subjected to a constant downward acceleration of  $9.81 \text{ m/s}^2$  due to gravity. Neglect the effect of air resistance.

## SOLUTION

**Coordinate System.** The origin  $O$  for the position coordinate  $s$  is taken at ground level with positive upward, Fig. 12-4.

**Maximum Height.** Since the rocket is traveling *upward*,  $v_A = +75 \text{ m/s}$  when  $t = 0$ . At the maximum height  $s = s_B$  the velocity  $v_B = 0$ . For the entire motion, the acceleration is  $a_c = -9.81 \text{ m/s}^2$  (negative since it acts in the *opposite* sense to positive velocity or positive displacement). Since  $a_c$  is *constant* the rocket's position may be related to its velocity at the two points  $A$  and  $B$  on the path by using Eq. 12-6, namely,

$$\begin{aligned} (+\uparrow) \quad v_B^2 &= v_A^2 + 2a_c(s_B - s_A) \\ 0 &= (75 \text{ m/s})^2 + 2(-9.81 \text{ m/s}^2)(s_B - 40 \text{ m}) \\ s_B &= 327 \text{ m} \end{aligned} \quad \text{Ans.}$$

**Velocity.** To obtain the velocity of the rocket just before it hits the ground, we can apply Eq. 12-6 between points  $B$  and  $C$ , Fig. 12-4.

$$\begin{aligned} (+\uparrow) \quad v_C^2 &= v_B^2 + 2a_c(s_C - s_B) \\ &= 0 + 2(-9.81 \text{ m/s}^2)(0 - 327 \text{ m}) \\ v_C &= -80.1 \text{ m/s} = 80.1 \text{ m/s} \downarrow \end{aligned} \quad \text{Ans.}$$

The negative root was chosen since the rocket is moving downward.

Similarly, Eq. 12-6 may also be applied between points  $A$  and  $C$ , i.e.,

$$\begin{aligned} (+\uparrow) \quad v_C^2 &= v_A^2 + 2a_c(s_C - s_A) \\ &= (75 \text{ m/s})^2 + 2(-9.81 \text{ m/s}^2)(0 - 40 \text{ m}) \\ v_C &= -80.1 \text{ m/s} = 80.1 \text{ m/s} \downarrow \end{aligned} \quad \text{Ans.}$$

**NOTE:** It should be realized that the rocket is subjected to a *deceleration* from  $A$  to  $B$  of  $9.81 \text{ m/s}^2$ , and then from  $B$  to  $C$  it is *accelerated* at this rate. Furthermore, even though the rocket momentarily comes to *rest* at  $B$  ( $v_B = 0$ ) the acceleration at  $B$  is still  $9.81 \text{ m/s}^2$  downward!

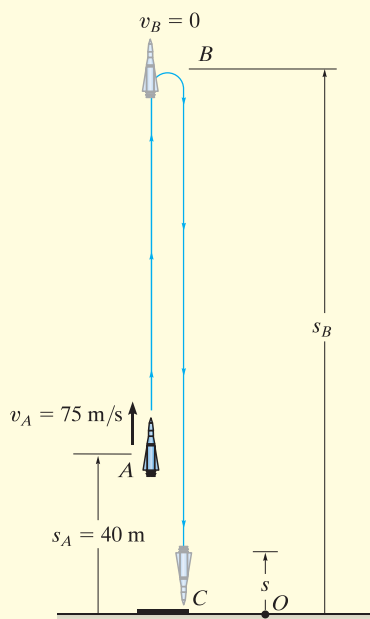


Fig. 12-4



**EXAMPLE 12.4**

A metallic particle is subjected to the influence of a magnetic field as it travels downward through a fluid that extends from plate *A* to plate *B*, Fig. 12–5. If the particle is released from rest at the midpoint *C*,  $s = 100$  mm, and the acceleration is  $a = (4s)$  m/s<sup>2</sup>, where  $s$  is in meters, determine the velocity of the particle when it reaches plate *B*,  $s = 200$  mm, and the time it takes to travel from *C* to *B*.

**SOLUTION**

**Coordinate System.** As shown in Fig. 12–5,  $s$  is positive downward, measured from plate *A*.

**Velocity.** Since  $a = f(s)$ , the velocity as a function of position can be obtained by using  $v dv = a ds$ . Realizing that  $v = 0$  at  $s = 0.1$  m, we have

$$\begin{aligned}
 (+\downarrow) \quad v dv &= a ds \\
 \int_0^v v dv &= \int_{0.1 \text{ m}}^s 4s ds \\
 \frac{1}{2}v^2 \Big|_0^v &= \frac{4}{2}s^2 \Big|_{0.1 \text{ m}}^s \\
 v &= 2(s^2 - 0.01)^{1/2} \text{ m/s} \quad (1)
 \end{aligned}$$

At  $s = 200$  mm = 0.2 m,

$$v_B = 0.346 \text{ m/s} = 346 \text{ mm/s} \downarrow \quad \text{Ans.}$$

The positive root is chosen since the particle is traveling downward, i.e., in the  $+s$  direction.

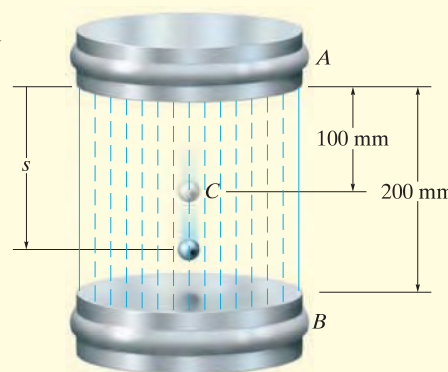
**Time.** The time for the particle to travel from *C* to *B* can be obtained using  $v = ds/dt$  and Eq. 1, where  $s = 0.1$  m when  $t = 0$ . From Appendix A,

$$\begin{aligned}
 (+\downarrow) \quad ds &= v dt \\
 &= 2(s^2 - 0.01)^{1/2} dt \\
 \int_{0.1}^s \frac{ds}{(s^2 - 0.01)^{1/2}} &= \int_0^t 2 dt \\
 \ln(\sqrt{s^2 - 0.01} + s) \Big|_{0.1}^s &= 2t \Big|_0^t \\
 \ln(\sqrt{s^2 - 0.01} + s) + 2.303 &= 2t
 \end{aligned}$$

At  $s = 0.2$  m,

$$t = \frac{\ln(\sqrt{(0.2)^2 - 0.01} + 0.2) + 2.303}{2} = 0.658 \text{ s} \quad \text{Ans.}$$

**NOTE:** The formulas for constant acceleration cannot be used here because the acceleration changes with position, i.e.,  $a = 4s$ .



**Fig. 12–5**

## EXAMPLE 12.5

A particle moves along a horizontal path with a velocity of  $v = (3t^2 - 6t)$  m/s, where  $t$  is the time in seconds. If it is initially located at the origin  $O$ , determine the distance traveled in 3.5 s, and the particle's average velocity and average speed during the time interval.

## SOLUTION

**Coordinate System.** Here positive motion is to the right, measured from the origin  $O$ , Fig. 12-6a.

**Distance Traveled.** Since  $v = f(t)$ , the position as a function of time may be found by integrating  $v = ds/dt$  with  $t = 0$ ,  $s = 0$ .

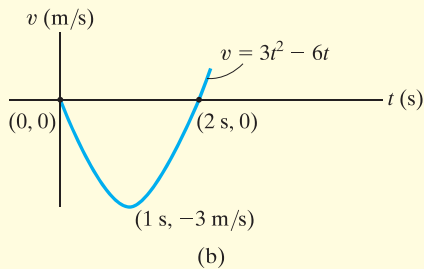
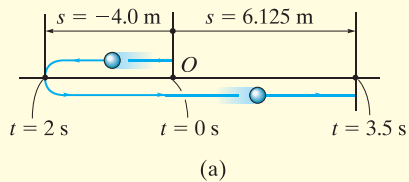


Fig. 12-6

$$\begin{aligned}
 (\pm) \quad ds &= v dt \\
 &= (3t^2 - 6t) dt \\
 \int_0^s ds &= \int_0^t (3t^2 - 6t) dt \\
 s &= (t^3 - 3t^2) \text{ m} \quad (1)
 \end{aligned}$$

In order to determine the distance traveled in 3.5 s, it is necessary to investigate the path of motion. If we consider a graph of the velocity function, Fig. 12-6b, then it reveals that for  $0 < t < 2$  s the velocity is *negative*, which means the particle is traveling to the *left*, and for  $t > 2$  s the velocity is *positive*, and hence the particle is traveling to the *right*. Also, note that  $v = 0$  at  $t = 2$  s. The particle's position when  $t = 0$ ,  $t = 2$  s, and  $t = 3.5$  s can be determined from Eq. 1. This yields

$$s|_{t=0} = 0 \quad s|_{t=2\text{ s}} = -4.0 \text{ m} \quad s|_{t=3.5\text{ s}} = 6.125 \text{ m}$$

The path is shown in Fig. 12-6a. Hence, the distance traveled in 3.5 s is

$$s_T = 4.0 + 4.0 + 6.125 = 14.125 \text{ m} = 14.1 \text{ m} \quad \text{Ans.}$$

**Velocity.** The *displacement* from  $t = 0$  to  $t = 3.5$  s is

$$\Delta s = s|_{t=3.5\text{ s}} - s|_{t=0} = 6.125 \text{ m} - 0 = 6.125 \text{ m}$$

and so the average velocity is

$$v_{\text{avg}} = \frac{\Delta s}{\Delta t} = \frac{6.125 \text{ m}}{3.5 \text{ s} - 0} = 1.75 \text{ m/s} \rightarrow \quad \text{Ans.}$$

The average speed is defined in terms of the *distance traveled*  $s_T$ . This positive scalar is

$$(v_{\text{sp}})_{\text{avg}} = \frac{s_T}{\Delta t} = \frac{14.125 \text{ m}}{3.5 \text{ s} - 0} = 4.04 \text{ m/s} \quad \text{Ans.}$$

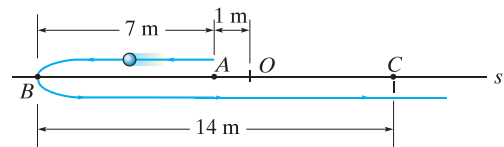
**NOTE:** In this problem, the acceleration is  $a = dv/dt = (6t - 6)$  m/s<sup>2</sup>, which is not constant.

It is highly suggested that you test yourself on the solutions to these examples, by covering them over and then trying to think about which equations of kinematics must be used and how they are applied in order to determine the unknowns. Then before solving any of the problems, try and solve some of the Preliminary and Fundamental Problems which follow. The solutions and answers to all these problems are given in the back of the book. **Doing this throughout the book will help immensely in understanding how to apply the theory, and thereby develop your problem-solving skills.**

## PRELIMINARY PROBLEM

### P12-1.

- a) If  $s = (2t^3)$  m, where  $t$  is in seconds, determine  $v$  when  $t = 2$  s.
- b) If  $v = (5s)$  m/s, where  $s$  is in meters, determine  $a$  at  $s = 1$  m.
- c) If  $v = (4t + 5)$  m/s, where  $t$  is in seconds, determine  $a$  when  $t = 2$  s.
- d) If  $a = 2 \text{ m/s}^2$ , determine  $v$  when  $t = 2$  s if  $v = 0$  when  $t = 0$ .
- e) If  $a = 2 \text{ m/s}^2$ , determine  $v$  at  $s = 4$  m if  $v = 3 \text{ m/s}$  at  $s = 0$ .
- f) If  $a = (s)$  m/s<sup>2</sup>, where  $s$  is in meters, determine  $v$  when  $s = 5$  m if  $v = 0$  at  $s = 4$  m.
- g) If  $a = 4 \text{ m/s}^2$ , determine  $s$  when  $t = 3$  s if  $v = 2 \text{ m/s}$  and  $s = 2 \text{ m}$  when  $t = 0$ .
- h) If  $a = (8t^2)$  m/s<sup>2</sup>, determine  $v$  when  $t = 1$  s if  $v = 0$  at  $t = 0$ .
- i) If  $s = (3t^2 + 2)$  m, determine  $v$  when  $t = 2$  s.
- j) When  $t = 0$  the particle is at  $A$ . In four seconds it travels to  $B$ , then in another six seconds it travels to  $C$ . Determine the average velocity and the average speed. The origin of the coordinate is at  $O$ .



Prob. P12-1

## FUNDAMENTAL PROBLEMS

**F12-1.** Initially, the car travels along a straight road with a speed of 35 m/s. If the brakes are applied and the speed of the car is reduced to 10 m/s in 15 s, determine the constant deceleration of the car.



Prob. F12-1

**F12-2.** A ball is thrown vertically upward with a speed of 15 m/s. Determine the time of flight when it returns to its original position.



Prob. F12-2

**F12-3.** A particle travels along a straight line with a velocity of  $v = (4t - 3t^2)$  m/s, where  $t$  is in seconds. Determine the position of the particle when  $t = 4$  s.  $s = 0$  when  $t = 0$ .

**F12-4.** A particle travels along a straight line with a speed  $v = (0.5t^3 - 8t)$  m/s, where  $t$  is in seconds. Determine the acceleration of the particle when  $t = 2$  s.

**F12-5.** The position of the particle is given by  $s = (2t^2 - 8t + 6)$  m, where  $t$  is in seconds. Determine the time when the velocity of the particle is zero, and the total distance traveled by the particle when  $t = 3$  s.



Prob. F12-5

**F12-6.** A particle travels along a straight line with an acceleration of  $a = (10 - 0.2s)$  m/s<sup>2</sup>, where  $s$  is measured in meters. Determine the velocity of the particle when  $s = 10$  m if  $v = 5$  m/s at  $s = 0$ .



Prob. F12-6

**F12-7.** A particle moves along a straight line such that its acceleration is  $a = (4t^2 - 2)$  m/s<sup>2</sup>, where  $t$  is in seconds. When  $t = 0$ , the particle is located 2 m to the left of the origin, and when  $t = 2$  s, it is 20 m to the left of the origin. Determine the position of the particle when  $t = 4$  s.

**F12-8.** A particle travels along a straight line with a velocity of  $v = (20 - 0.05s^2)$  m/s, where  $s$  is in meters. Determine the acceleration of the particle at  $s = 15$  m.

## PROBLEMS

12

**12-1.** Starting from rest, a particle moving in a straight line has an acceleration of  $a = (2t - 6) \text{ m/s}^2$ , where  $t$  is in seconds. What is the particle's velocity when  $t = 6 \text{ s}$ , and what is its position when  $t = 11 \text{ s}$ ?

**12-2.** If a particle has an initial velocity of  $v_0 = 12 \text{ ft/s}$  to the right, at  $s_0 = 0$ , determine its position when  $t = 10 \text{ s}$ , if  $a = 2 \text{ ft/s}^2$  to the left.

**12-3.** A particle travels along a straight line with a velocity  $v = (12 - 3t^2) \text{ m/s}$ , where  $t$  is in seconds. When  $t = 1 \text{ s}$ , the particle is located 10 m to the left of the origin. Determine the acceleration when  $t = 4 \text{ s}$ , the displacement from  $t = 0$  to  $t = 10 \text{ s}$ , and the distance the particle travels during this time period.

**\*12-4.** A particle travels along a straight line with a constant acceleration. When  $s = 4 \text{ ft}$ ,  $v = 3 \text{ ft/s}$  and when  $s = 10 \text{ ft}$ ,  $v = 8 \text{ ft/s}$ . Determine the velocity as a function of position.

**12-5.** The velocity of a particle traveling in a straight line is given by  $v = (6t - 3t^2) \text{ m/s}$ , where  $t$  is in seconds. If  $s = 0$  when  $t = 0$ , determine the particle's deceleration and position when  $t = 3 \text{ s}$ . How far has the particle traveled during the 3-s time interval, and what is its average speed?

**12-6.** The position of a particle along a straight line is given by  $s = (1.5t^3 - 13.5t^2 + 22.5t) \text{ ft}$ , where  $t$  is in seconds. Determine the position of the particle when  $t = 6 \text{ s}$  and the total distance it travels during the 6-s time interval. *Hint:* Plot the path to determine the total distance traveled.

**12-7.** A particle moves along a straight line such that its position is defined by  $s = (t^2 - 6t + 5) \text{ m}$ . Determine the average velocity, the average speed, and the acceleration of the particle when  $t = 6 \text{ s}$ .

**\*12-8.** A particle is moving along a straight line such that its position is defined by  $s = (10t^2 + 20) \text{ mm}$ , where  $t$  is in seconds. Determine (a) the displacement of the particle during the time interval from  $t = 1 \text{ s}$  to  $t = 5 \text{ s}$ , (b) the average velocity of the particle during this time interval, and (c) the acceleration when  $t = 1 \text{ s}$ .

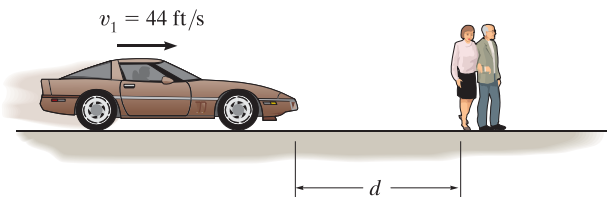
**12-9.** The acceleration of a particle as it moves along a straight line is given by  $a = (2t - 1) \text{ m/s}^2$ , where  $t$  is in seconds. If  $s = 1 \text{ m}$  and  $v = 2 \text{ m/s}$  when  $t = 0$ , determine the particle's velocity and position when  $t = 6 \text{ s}$ . Also, determine the total distance the particle travels during this time period.

**12-10.** A particle moves along a straight line with an acceleration of  $a = 5/(3s^{1/3} + s^{5/2}) \text{ m/s}^2$ , where  $s$  is in meters. Determine the particle's velocity when  $s = 2 \text{ m}$ , if it starts from rest when  $s = 1 \text{ m}$ . Use a numerical method to evaluate the integral.

**12-11.** A particle travels along a straight-line path such that in 4 s it moves from an initial position  $s_A = -8 \text{ m}$  to a position  $s_B = +3 \text{ m}$ . Then in another 5 s it moves from  $s_B$  to  $s_C = -6 \text{ m}$ . Determine the particle's average velocity and average speed during the 9-s time interval.

**\*12-12.** Traveling with an initial speed of 70 km/h, a car accelerates at  $6000 \text{ km/h}^2$  along a straight road. How long will it take to reach a speed of 120 km/h? Also, through what distance does the car travel during this time?

**12-13.** Tests reveal that a normal driver takes about 0.75 s before he or she can *react* to a situation to avoid a collision. It takes about 3 s for a driver having 0.1% alcohol in his system to do the same. If such drivers are traveling on a straight road at 30 mph (44 ft/s) and their cars can decelerate at  $2 \text{ ft/s}^2$ , determine the shortest stopping distance  $d$  for each from the moment they see the pedestrians. *Moral:* If you must drink, please don't drive!



Prob. 12-13

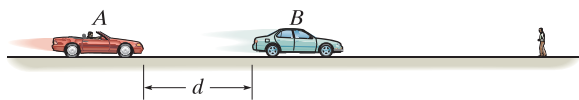
12

**12-14.** The position of a particle along a straight-line path is defined by  $s = (t^3 - 6t^2 - 15t + 7)$  ft, where  $t$  is in seconds. Determine the total distance traveled when  $t = 10$  s. What are the particle's average velocity, average speed, and the instantaneous velocity and acceleration at this time?

**12-15.** A particle is moving with a velocity of  $v_0$  when  $s = 0$  and  $t = 0$ . If it is subjected to a deceleration of  $a = -kv^3$ , where  $k$  is a constant, determine its velocity and position as functions of time.

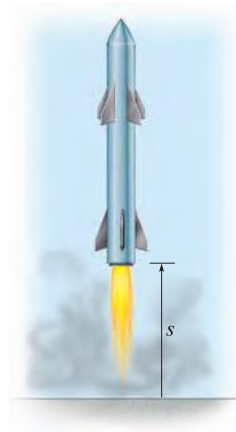
**\*12-16.** A particle is moving along a straight line with an initial velocity of 6 m/s when it is subjected to a deceleration of  $a = (-1.5v^{1/2})$  m/s<sup>2</sup>, where  $v$  is in m/s. Determine how far it travels before it stops. How much time does this take?

**12-17.** Car  $B$  is traveling a distance  $d$  ahead of car  $A$ . Both cars are traveling at 60 ft/s when the driver of  $B$  suddenly applies the brakes, causing his car to decelerate at 12 ft/s<sup>2</sup>. It takes the driver of car  $A$  0.75 s to react (this is the normal reaction time for drivers). When he applies his brakes, he decelerates at 15 ft/s<sup>2</sup>. Determine the minimum distance  $d$  between the cars so as to avoid a collision.



Prob. 12-17

**12-18.** The acceleration of a rocket traveling upward is given by  $a = (6 + 0.02s)$  m/s<sup>2</sup>, where  $s$  is in meters. Determine the time needed for the rocket to reach an altitude of  $s = 100$  m. Initially,  $v = 0$  and  $s = 0$  when  $t = 0$ .



Prob. 12-18

**12-19.** A train starts from rest at station  $A$  and accelerates at 0.5 m/s<sup>2</sup> for 60 s. Afterwards it travels with a constant velocity for 15 min. It then decelerates at 1 m/s<sup>2</sup> until it is brought to rest at station  $B$ . Determine the distance between the stations.

**\*12-20.** The velocity of a particle traveling along a straight line is  $v = (3t^2 - 6t)$  ft/s, where  $t$  is in seconds. If  $s = 4$  ft when  $t = 0$ , determine the position of the particle when  $t = 4$  s. What is the total distance traveled during the time interval  $t = 0$  to  $t = 4$  s? Also, what is the acceleration when  $t = 2$  s?

**12-21.** A freight train travels at  $v = 60(1 - e^{-t})$  ft/s, where  $t$  is the elapsed time in seconds. Determine the distance traveled in three seconds, and the acceleration at this time.



Prob. 12-21

**12-22.** A sandbag is dropped from a balloon which is ascending vertically at a constant speed of 6 m/s. If the bag is released with the same upward velocity of 6 m/s when  $t = 0$  and hits the ground when  $t = 8$  s, determine the speed of the bag as it hits the ground and the altitude of the balloon at this instant.

**12-23.** A particle is moving along a straight line such that its acceleration is defined as  $a = (-2v)$  m/s<sup>2</sup>, where  $v$  is in meters per second. If  $v = 20$  m/s when  $s = 0$  and  $t = 0$ , determine the particle's position, velocity, and acceleration as functions of time.

**\*12-24.** The acceleration of a particle traveling along a straight line is  $a = \frac{1}{4} s^{1/2}$  m/s<sup>2</sup>, where  $s$  is in meters. If  $v = 0$ ,  $s = 1$  m when  $t = 0$ , determine the particle's velocity at  $s = 2$  m.

**12-25.** If the effects of atmospheric resistance are accounted for, a freely falling body has an acceleration defined by the equation  $a = 9.81[1 - v^2(10^{-4})]$  m/s<sup>2</sup>, where  $v$  is in m/s and the positive direction is downward. If the body is released from rest at a *very high altitude*, determine (a) the velocity when  $t = 5$  s, and (b) the body's terminal or maximum attainable velocity (as  $t \rightarrow \infty$ ).

**12-26.** The acceleration of a particle along a straight line is defined by  $a = (2t - 9)$  m/s<sup>2</sup>, where  $t$  is in seconds. At  $t = 0$ ,  $s = 1$  m and  $v = 10$  m/s. When  $t = 9$  s, determine (a) the particle's position, (b) the total distance traveled, and (c) the velocity.

**12-27.** When a particle falls through the air, its initial acceleration  $a = g$  diminishes until it is zero, and thereafter it falls at a constant or terminal velocity  $v_f$ . If this variation of the acceleration can be expressed as  $a = (g/v_f^2)(v_f^2 - v^2)$ , determine the time needed for the velocity to become  $v = v_f/2$ . Initially the particle falls from rest.

**\*12-28.** Two particles  $A$  and  $B$  start from rest at the origin  $s = 0$  and move along a straight line such that  $a_A = (6t - 3)$  ft/s<sup>2</sup> and  $a_B = (12t^2 - 8)$  ft/s<sup>2</sup>, where  $t$  is in seconds. Determine the distance between them when  $t = 4$  s and the total distance each has traveled in  $t = 4$  s.

**12-29.** A ball  $A$  is thrown vertically upward from the top of a 30-m-high building with an initial velocity of 5 m/s. At the same instant another ball  $B$  is thrown upward from the ground with an initial velocity of 20 m/s. Determine the height from the ground and the time at which they pass.

**12-30.** A sphere is fired downwards into a medium with an initial speed of 27 m/s. If it experiences a deceleration of  $a = (-6t)$  m/s<sup>2</sup>, where  $t$  is in seconds, determine the distance traveled before it stops.

**12-31.** The velocity of a particle traveling along a straight line is  $v = v_0 - ks$ , where  $k$  is constant. If  $s = 0$  when  $t = 0$ , determine the position and acceleration of the particle as a function of time.

**\*12-32.** Ball  $A$  is thrown vertically upwards with a velocity of  $v_0$ . Ball  $B$  is thrown upwards from the same point with the same velocity  $t$  seconds later. Determine the elapsed time  $t < 2v_0/g$  from the instant ball  $A$  is thrown to when the balls pass each other, and find the velocity of each ball at this instant.

**12-33.** As a body is projected to a high altitude above the earth's *surface*, the variation of the acceleration of gravity with respect to altitude  $y$  must be taken into account. Neglecting air resistance, this acceleration is determined from the formula  $a = -g_0[R^2/(R + y)^2]$ , where  $g_0$  is the constant gravitational acceleration at sea level,  $R$  is the radius of the earth, and the positive direction is measured upward. If  $g_0 = 9.81$  m/s<sup>2</sup> and  $R = 6356$  km, determine the minimum initial velocity (escape velocity) at which a projectile should be shot vertically from the earth's surface so that it does not fall back to the earth. *Hint:* This requires that  $v = 0$  as  $y \rightarrow \infty$ .

**12-34.** Accounting for the variation of gravitational acceleration  $a$  with respect to altitude  $y$  (see Prob. 12-36), derive an equation that relates the velocity of a freely falling particle to its altitude. Assume that the particle is released from rest at an altitude  $y_0$  from the earth's surface. With what velocity does the particle strike the earth if it is released from rest at an altitude  $y_0 = 500$  km? Use the numerical data in Prob. 12-33.

This document was created with Win2PDF available at <http://www.daneprairie.com>.  
The unregistered version of Win2PDF is for evaluation or non-commercial use only.