

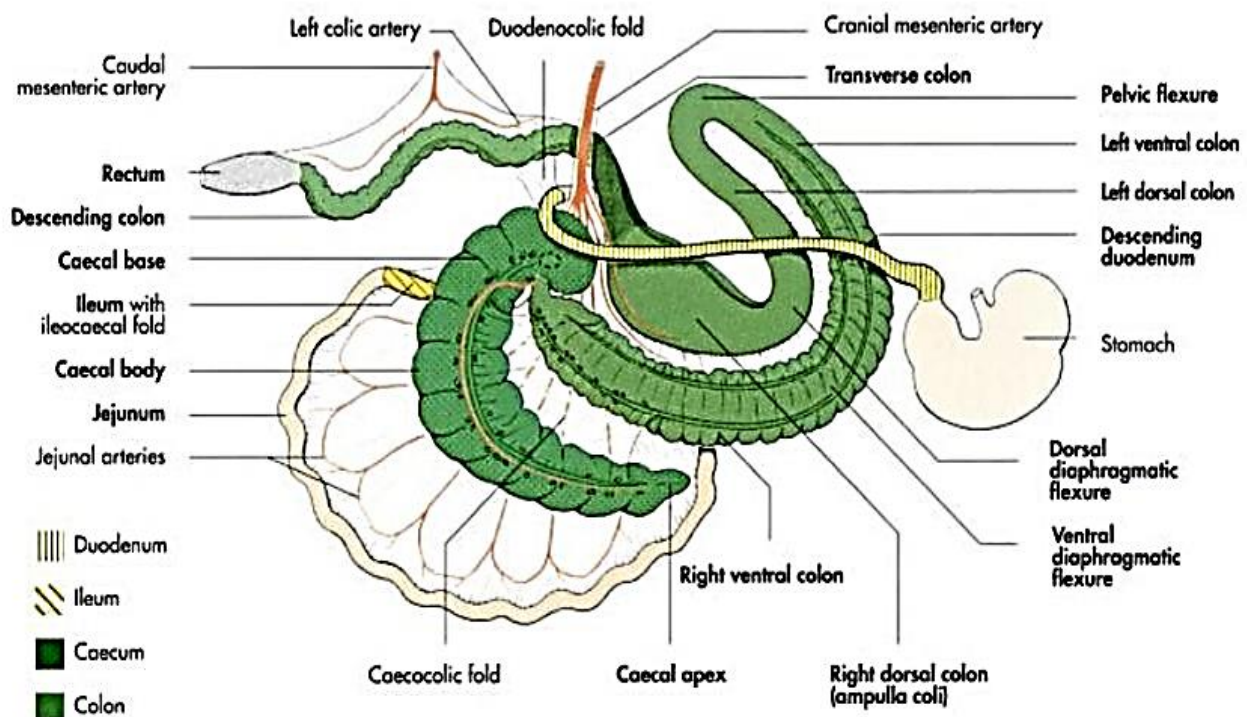


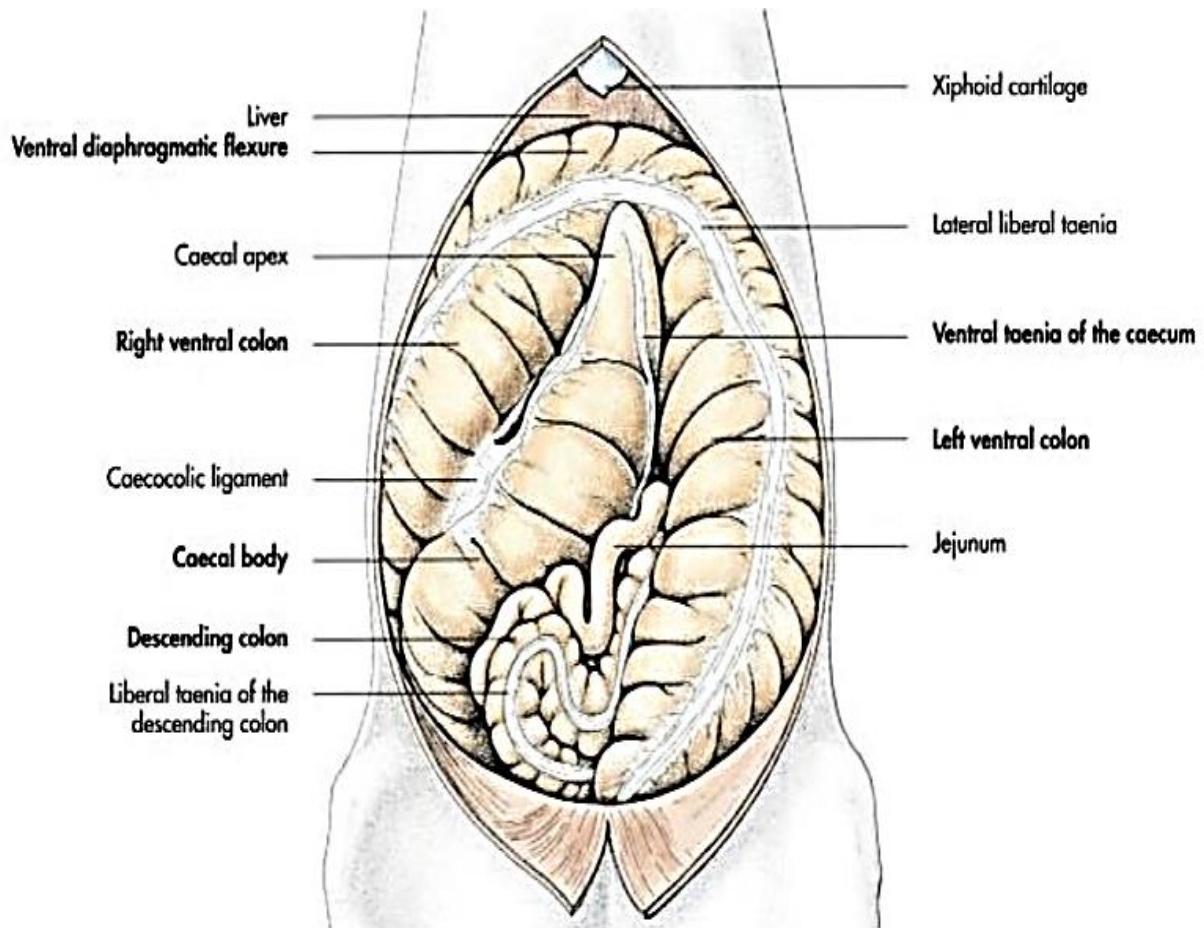
Digestive System

Colon of horse consist of three parts: ascending , transverse and descending parts.

1-*Ascending colon (large colon) : long with large diameter. It doubles on itself (2) times to form (2) large loops, each of them has U-shape, occupy the lower half of the abdominal cavity , one above the other.

The first part of the lower loop that attach the cecum is called **right ventral colon**; it starts from the cecocolic junction, extend cranially then bent (curved) forming the sternal flexure, then extend as the **left ventral colon** that extend caudally to end at the pelvic inlet forming the pelvic flexure , which limiting the beginning of the upper loop where it's first part called the **left dorsal colon**, which pass cranially above the left ventral colon and end at the diaphragmatic flexure, which formed above the sternal flexure. From diaphragmatic flexure the colon return caudally forming the **right dorsal colon**, which is relatively short and wide.





Taenia: muscular bands present along the cecum and colon of horse aid in increasing the surface area of these organs. Taenia are the reason of sacculataion appearance in these organs.

Number of taenia (muscular bands):

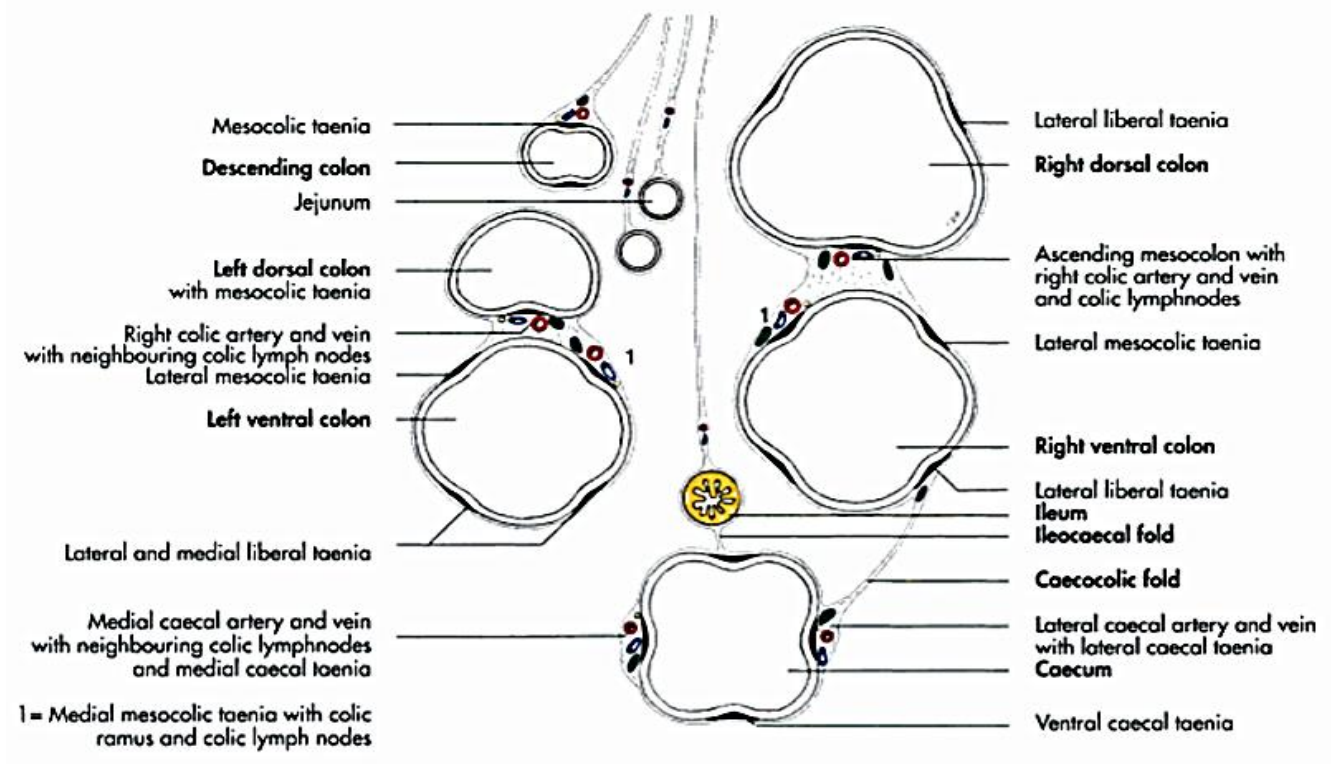
- Four taenia(4muscular bands) in cecum (dorsal , ventral , lateral , medial).
- Four taenia in right ventral colon (dorsal , ventral , lateral , medial).
- Four taenia in left ventral colon . (dorsal , ventral , lateral , medial).
- Three taenia in right dorsal colon (ventral , lateral , medial).
- One taenia in left dorsal colon.
- Two taenia in descending colon.

2-*Transverse colon: begin at the end of the right dorsal colon pass from right to left cranial to the cranial mesenteric artery.

3-*Descending colon (small colon):

- The caudal continuation of the transverse colon . It has several loops .
- It occupy the dorsal left part of the abdominal cavity mingled with the loops of the small intestine.
- It has 2 muscular bands(2 taenia).





The rectum :

Short terminal part of intestine , start at the end of the descending colon and end at the anal canal. It has swelling called ampulla recti , which is distinct in horse .

