



# Inflammation

Assist. Prof. Enas Sheet

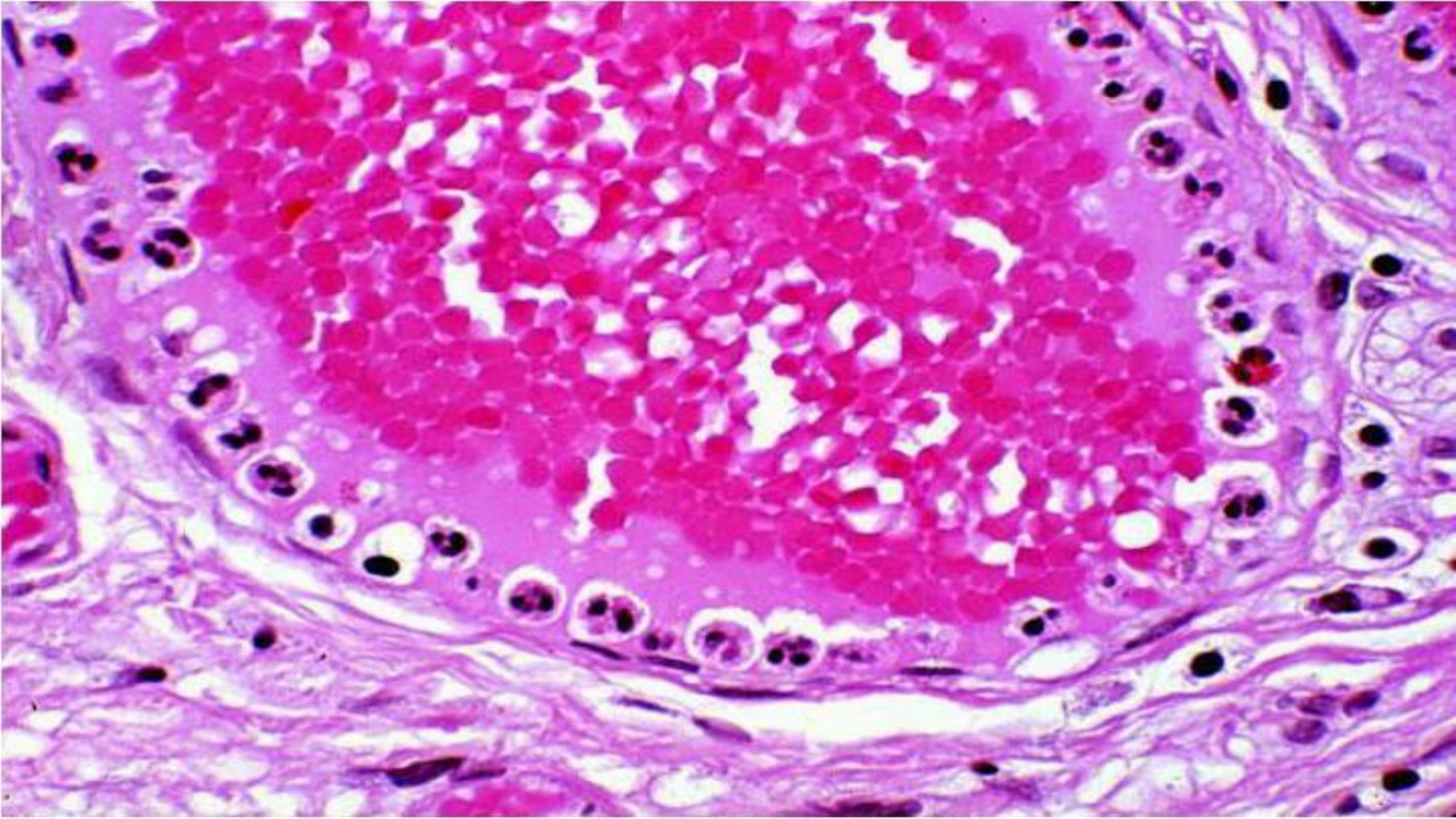
Lecturer Dr. Sanaria Hanna

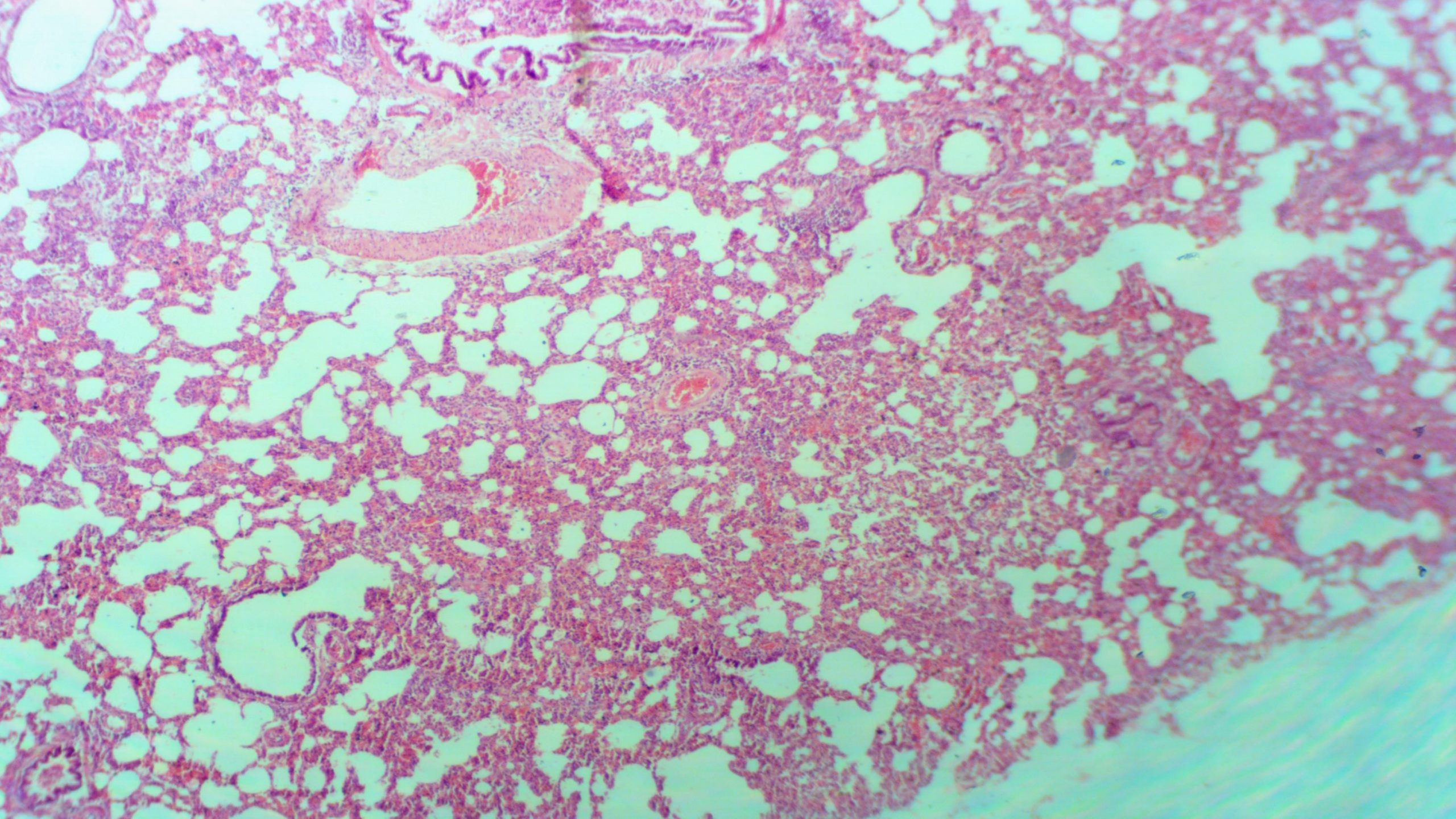
Lecturer Aseel Mohammed

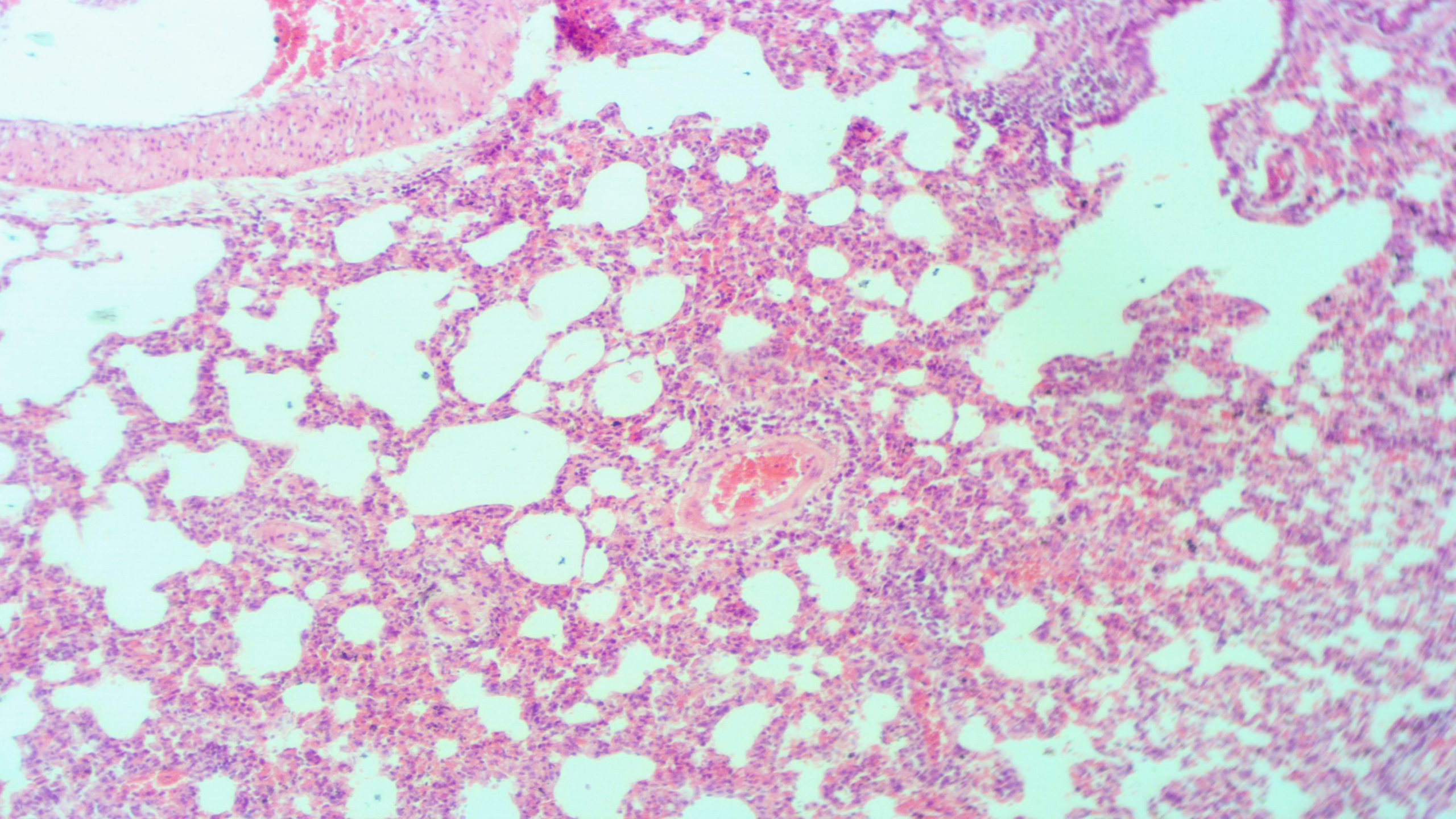
Assist. Prof. Entisar Khazal

Assist. Lecturer Atheer Nabeel

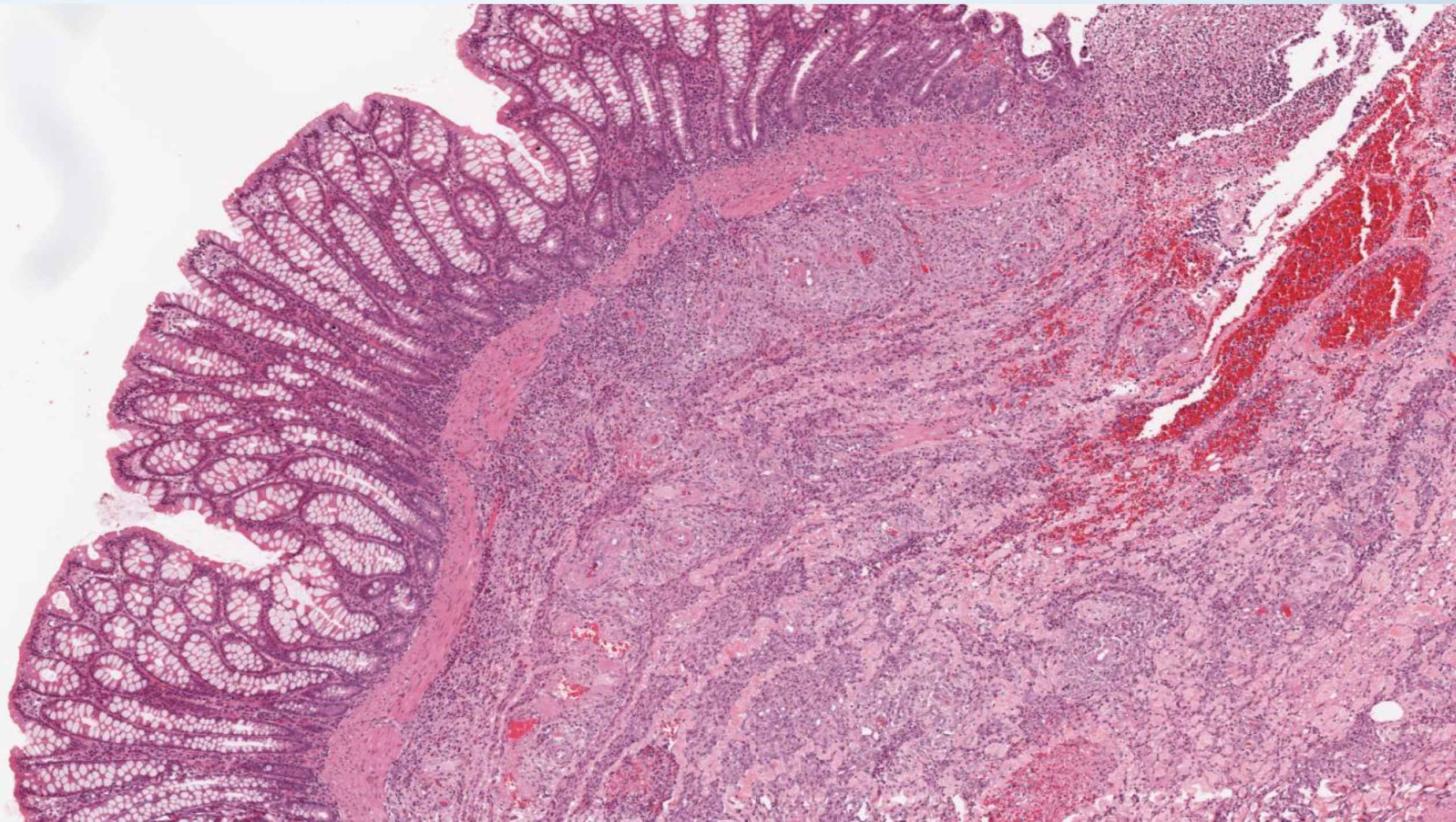
- **Diagnosis: Acute inflammation**
- **Organ: Lung**
- **Stain: H&E**
- **Lesions:**
  1. **Severe congestion and hyperemia.**
  2. **Inflammatory exudates in pulmonary alveoli.**
  3. **Infiltration of polymorph nuclear inflammatory cells represented by neutrophils.**
  4. **Pavementation of WBCs.**

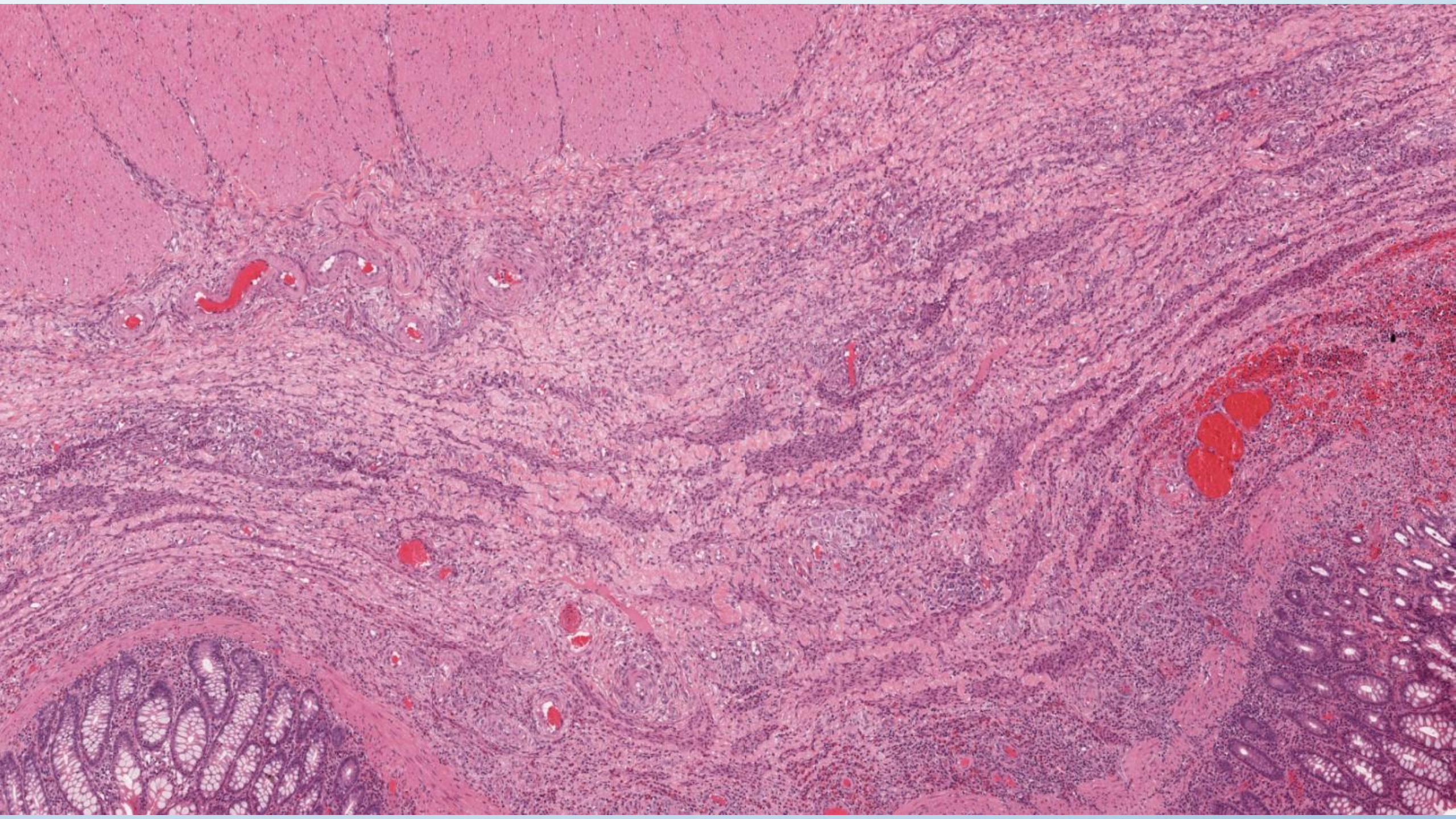




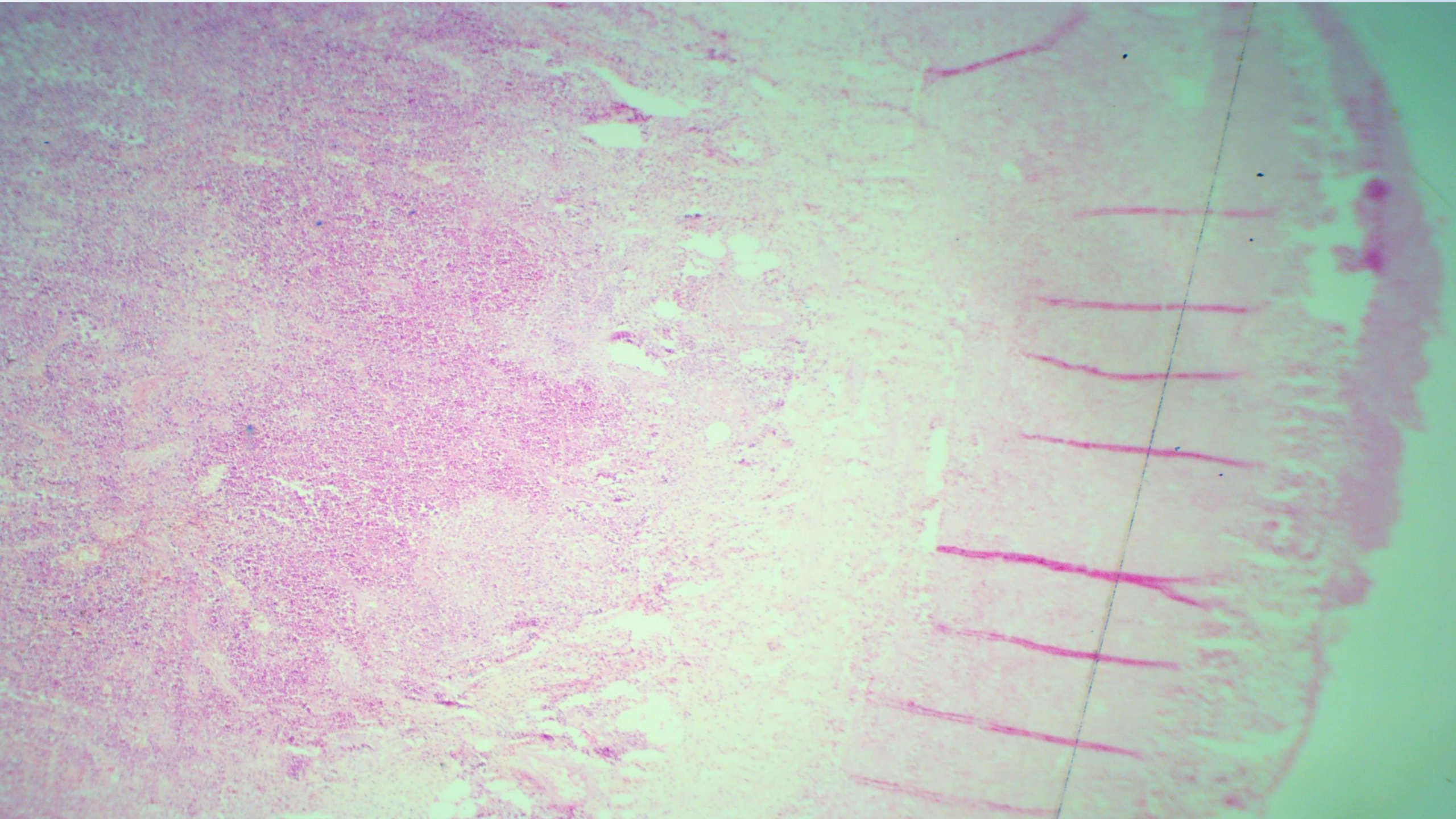


- **Diagnosis:** Fibrinous inflammation
- **Organ:** Appendix
- **Stain:** H&E
- **Lesions:**
  1. Cellular and vascular changes in the tissue.
  2. Non homogenous pink exudates due to presence of fibrin and fibrin threads which are structureless.
  3. Infiltration of polymorph nuclear inflammatory cells.









- **Diagnosis:** Chronic suppurative inflammation (Abscess)
- **Organ:** Liver
- **Stain:** H&E
- **Lesions:**
  1. Necrotic foci in the tissue represent liquefactive necrosis containing the suppurative exudate with bacteria & calcium salt deposition.
  2. Infiltration of inflammatory cells represented by live & dead neutrophils with mononuclear inflammatory cells such as macrophages & lymphocytes.
  3. Presence of capsule consist of fibrous tissue surrounding these foci forming large structureless cyst.

