



Nervous System

Assist. Prof. Enas Sheet

Lecturer Dr. Sanaria Hanna

Lecturer Aseel Mohammed

Lecturer Entisar Khazal

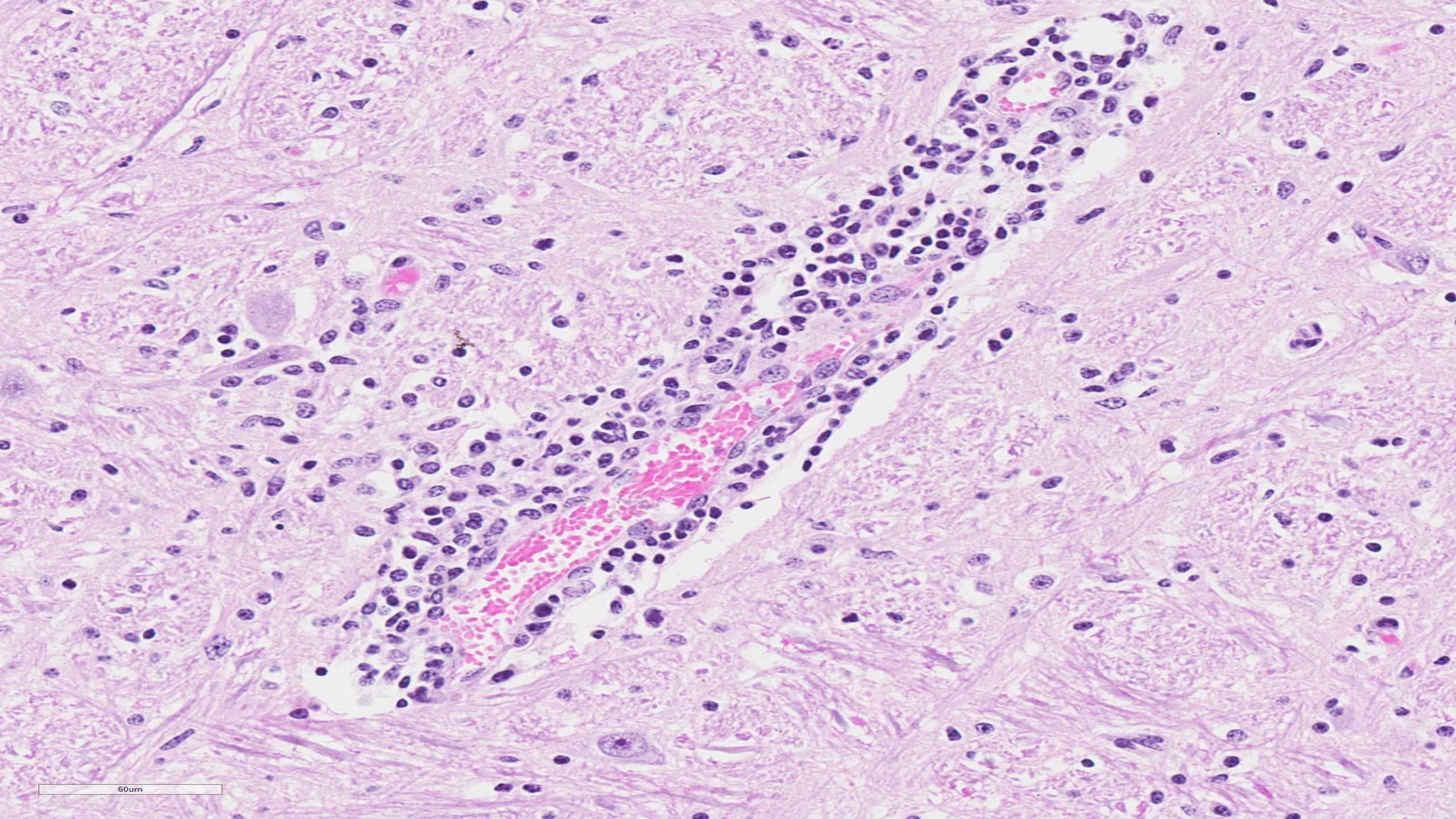
Assist. Lecturer Atheer Nabeel

Diagnosis: Rabies

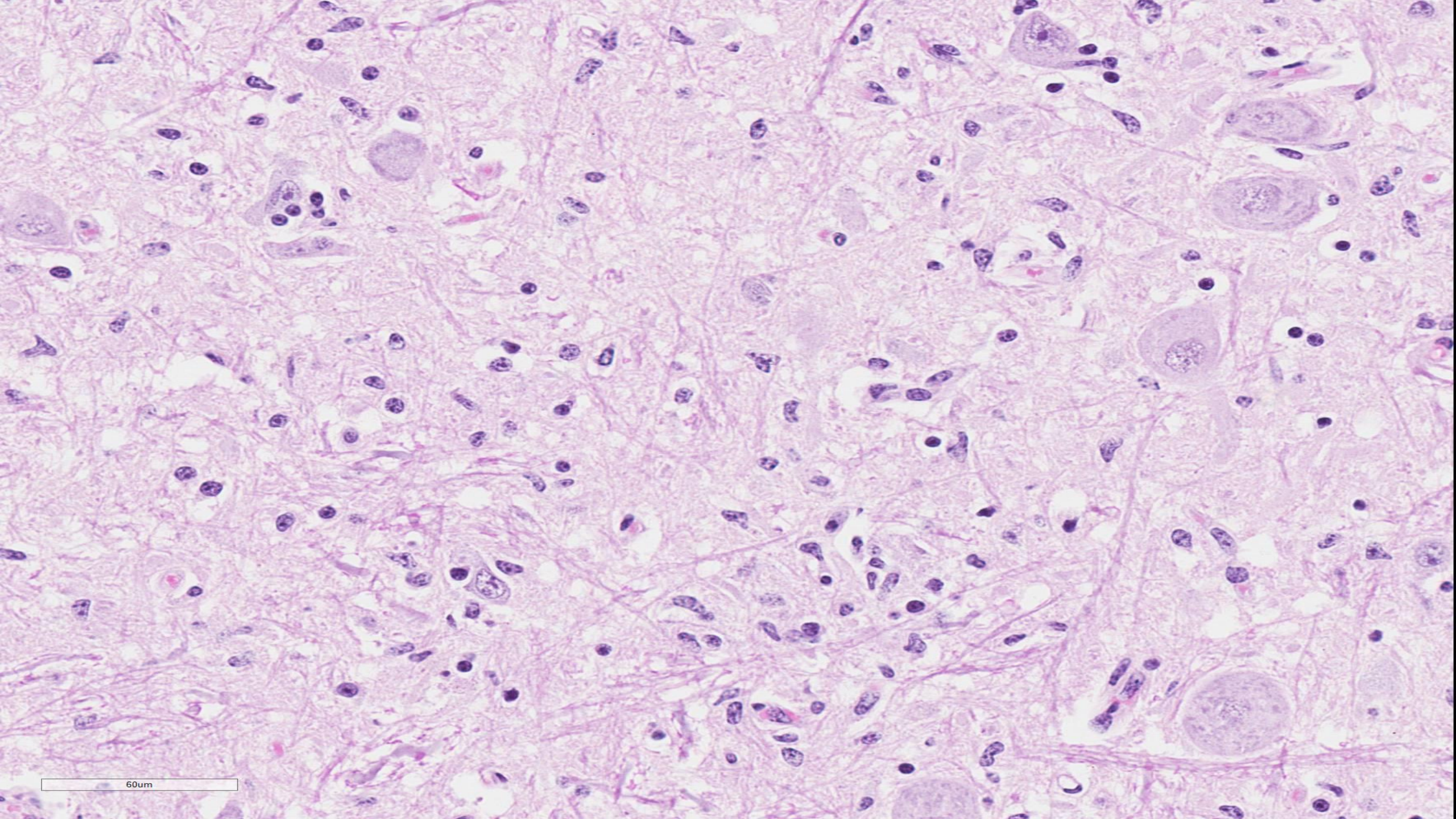
Organ: Brain

Lesions:

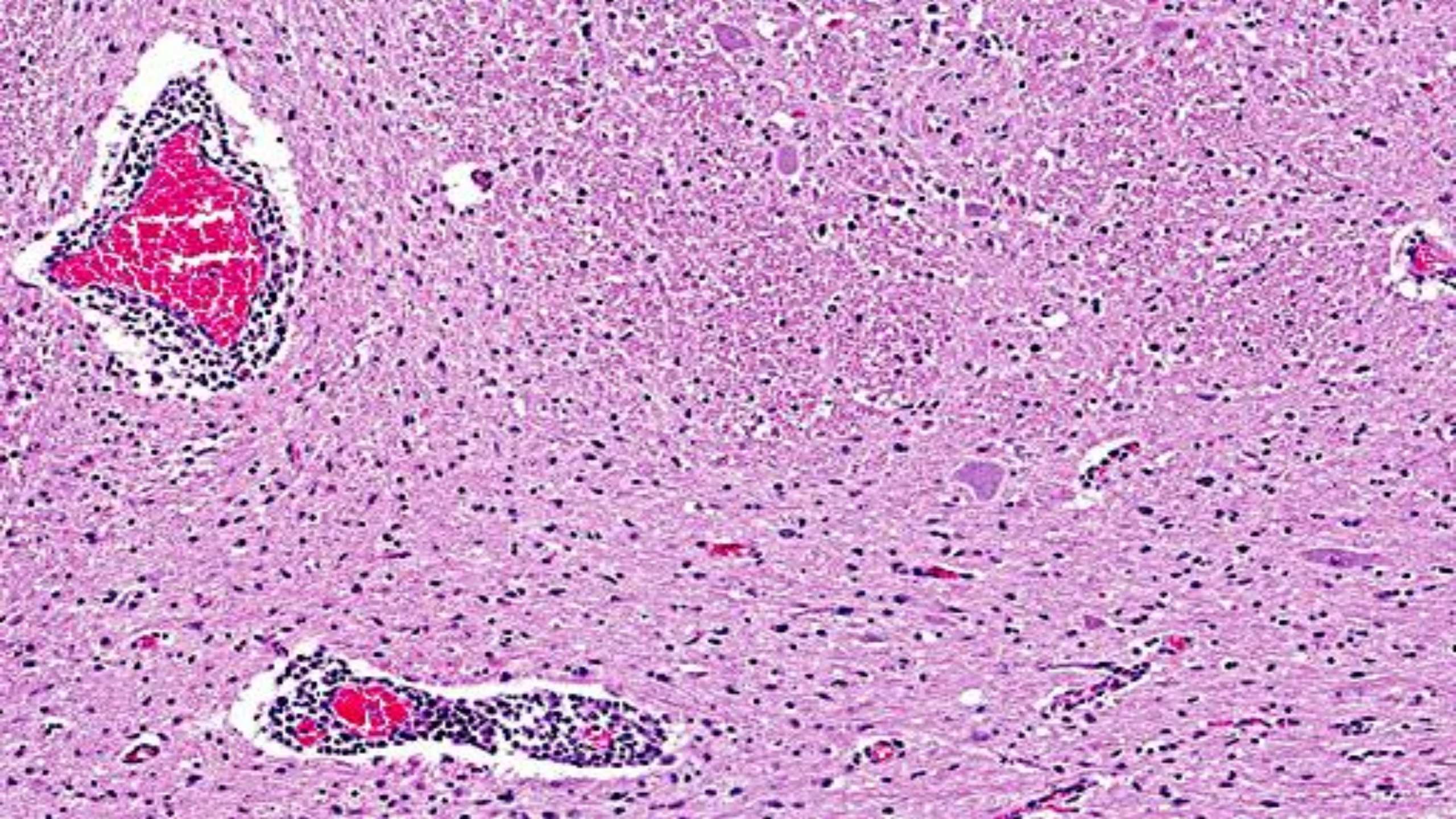
1. Perivascular cuffing are widespread in the medulla and vary from mild and single-cell thick to several layers thick.
2. Gliosis is prominent in nuclei and perivascular where the glial cells almost form nodules.
3. Many neurons contain round to oval, homogeneous intracytoplasmic inclusions bodies (Negri bodies).
4. Infiltration of inflammatory cells which composed of lymphocytes, plasma cells and macrophages.

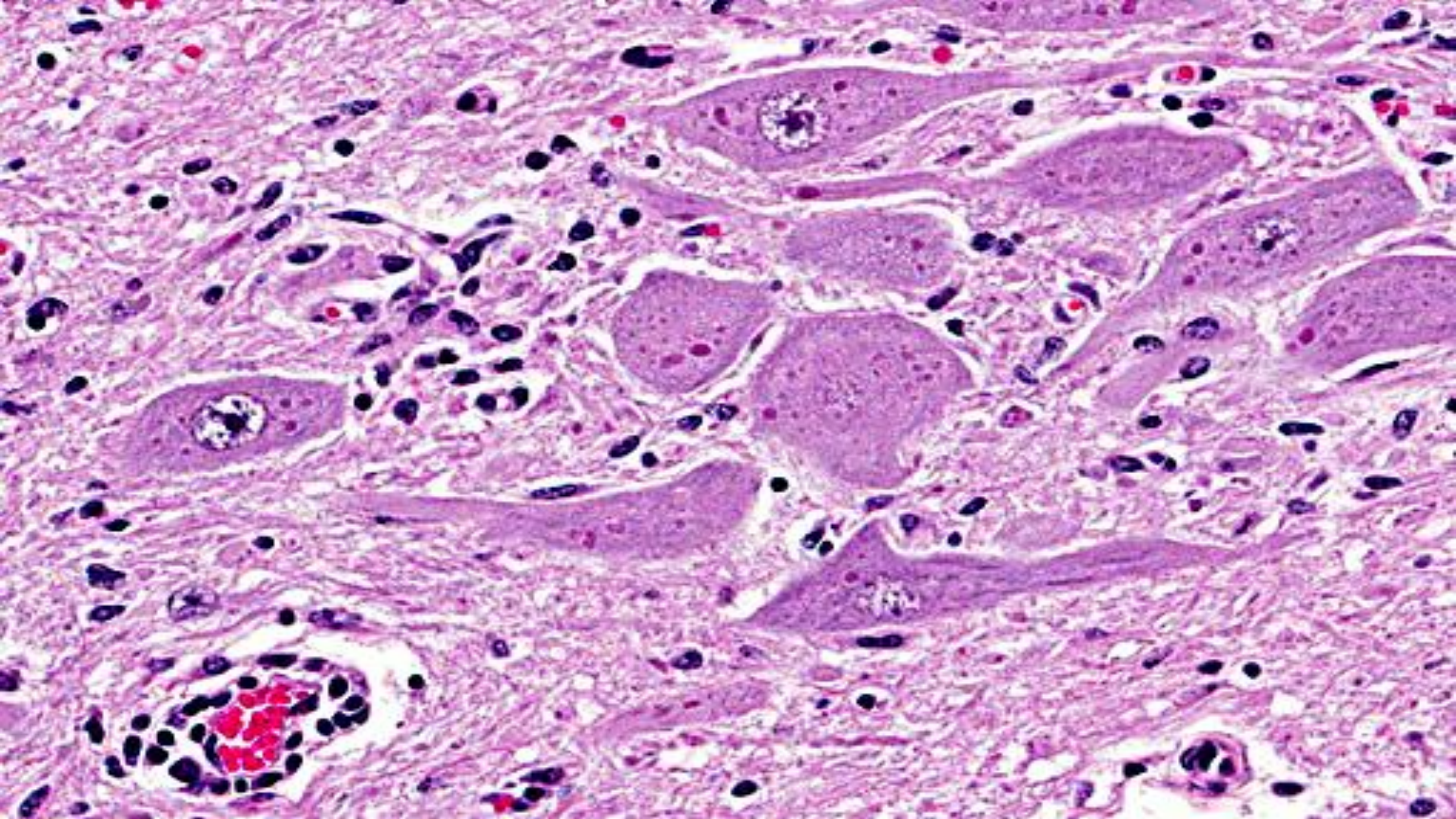


60um



60um



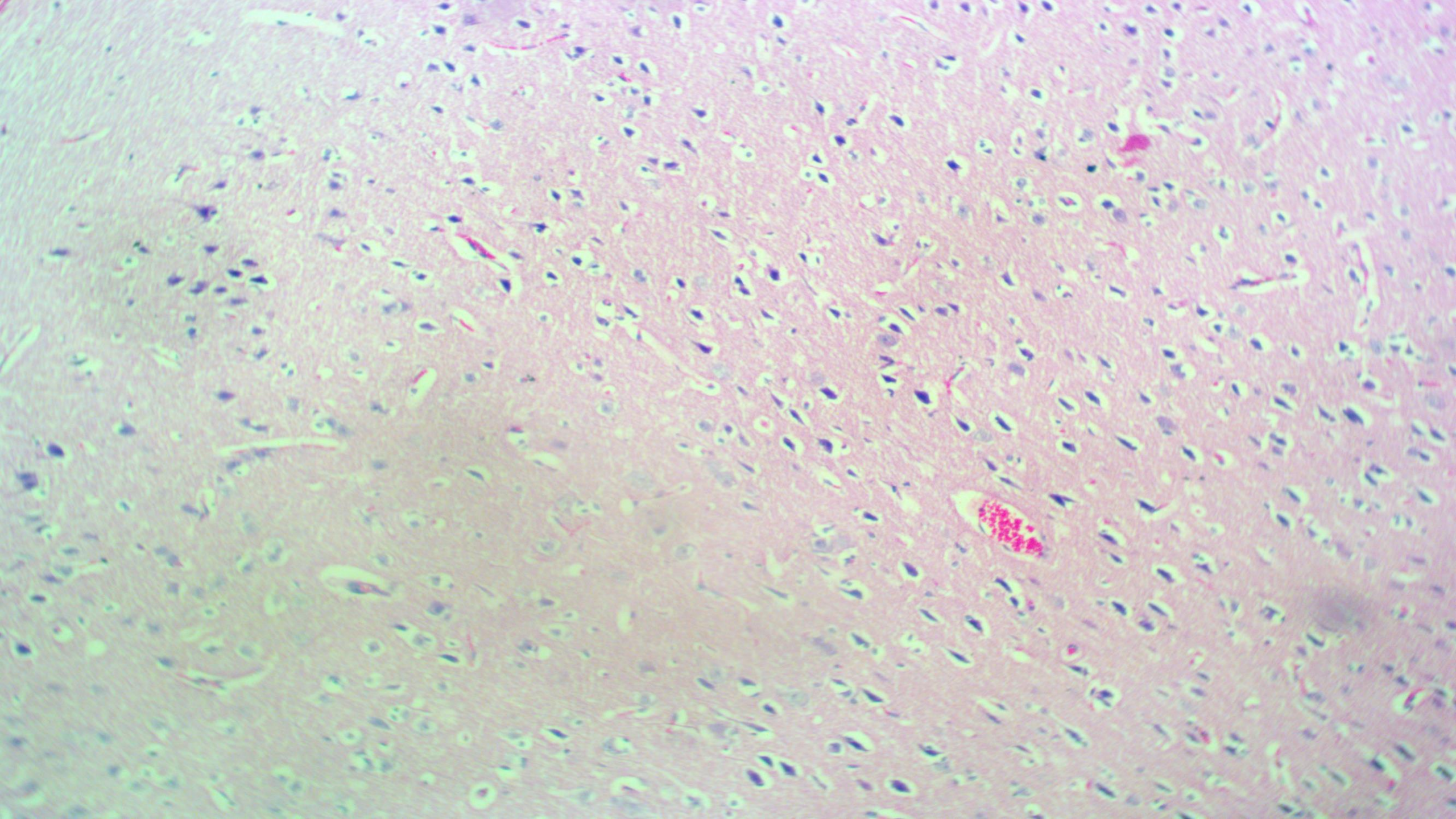


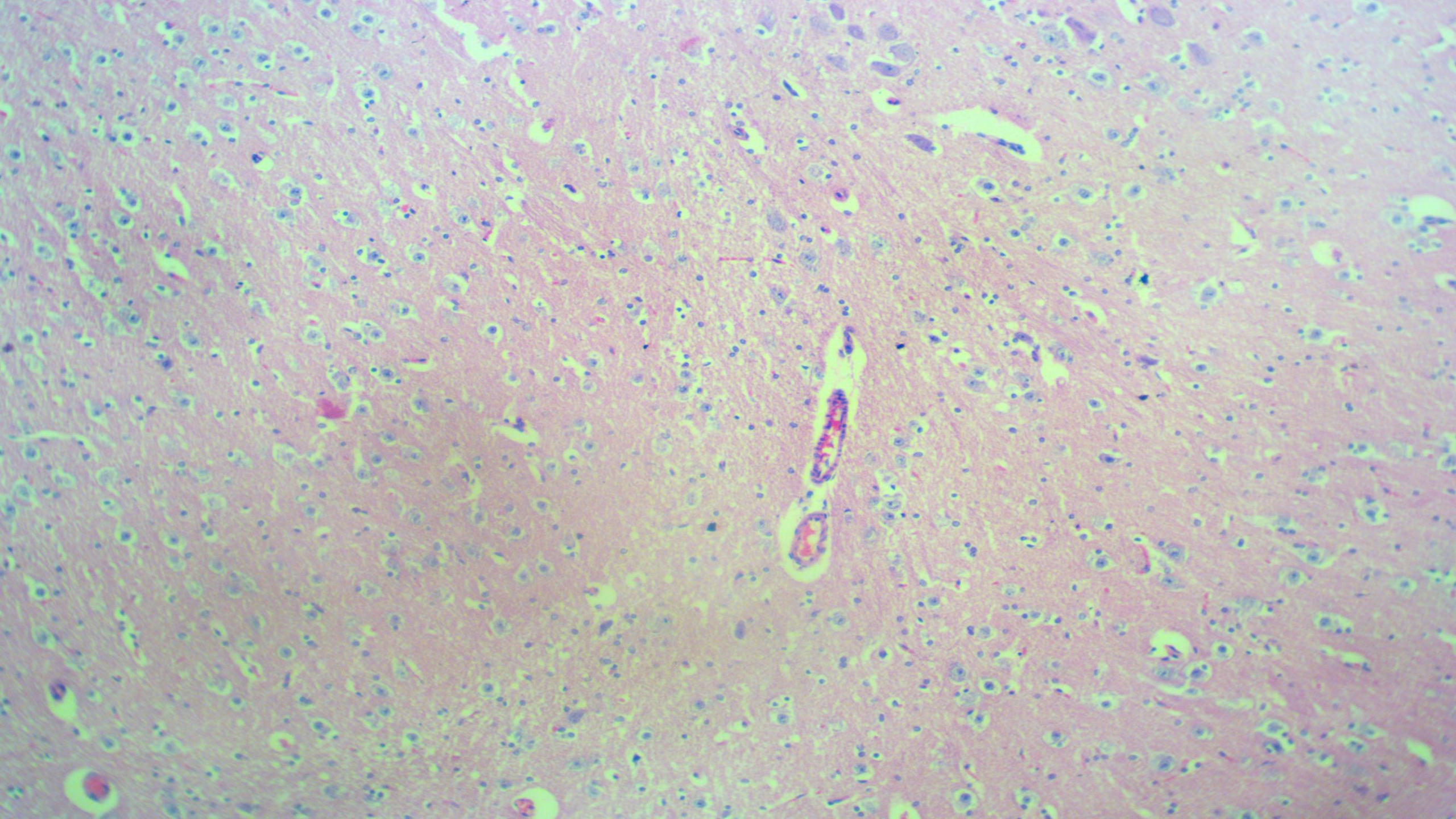
Diagnosis: Encephalitis

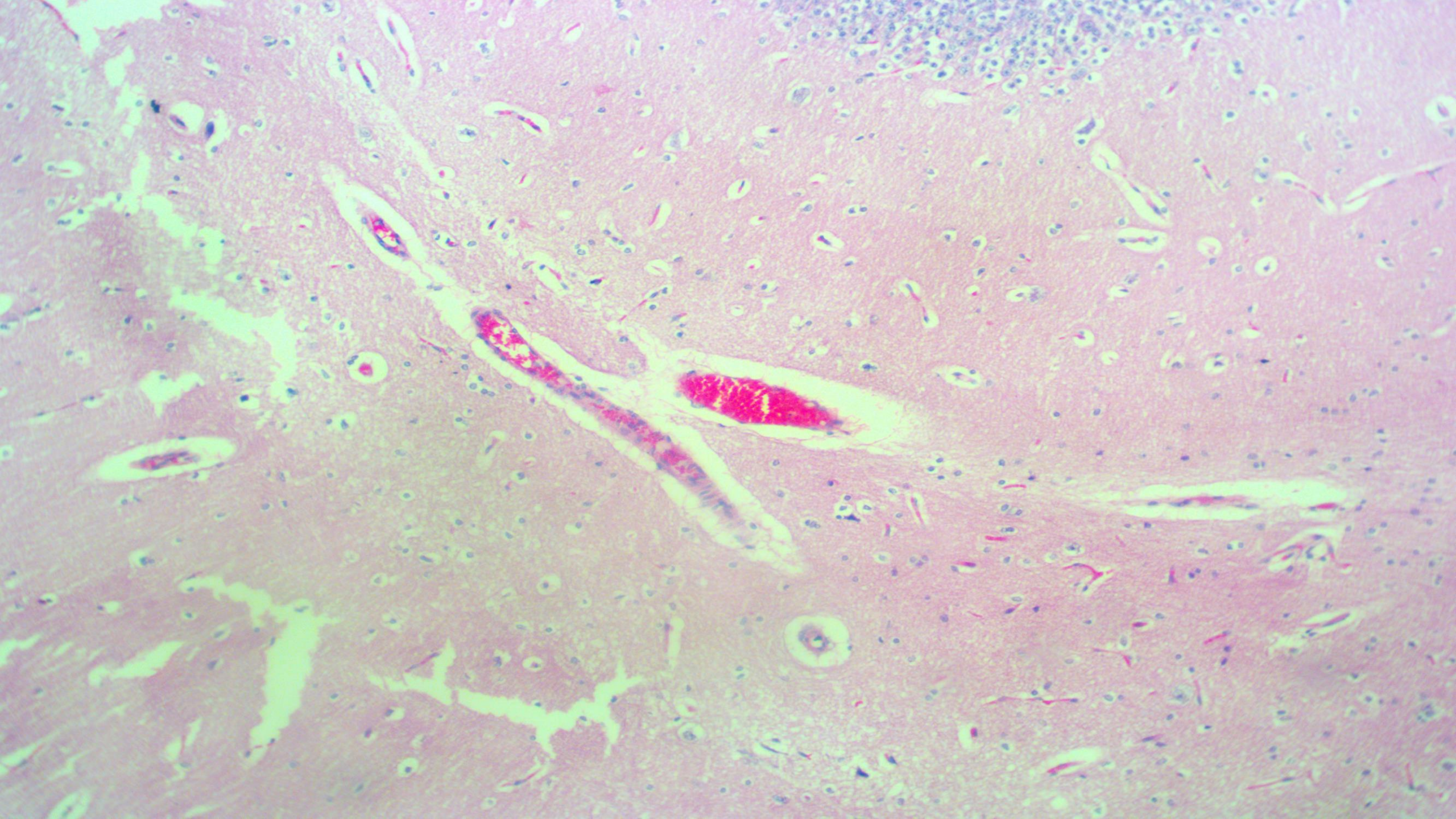
Organ: brain

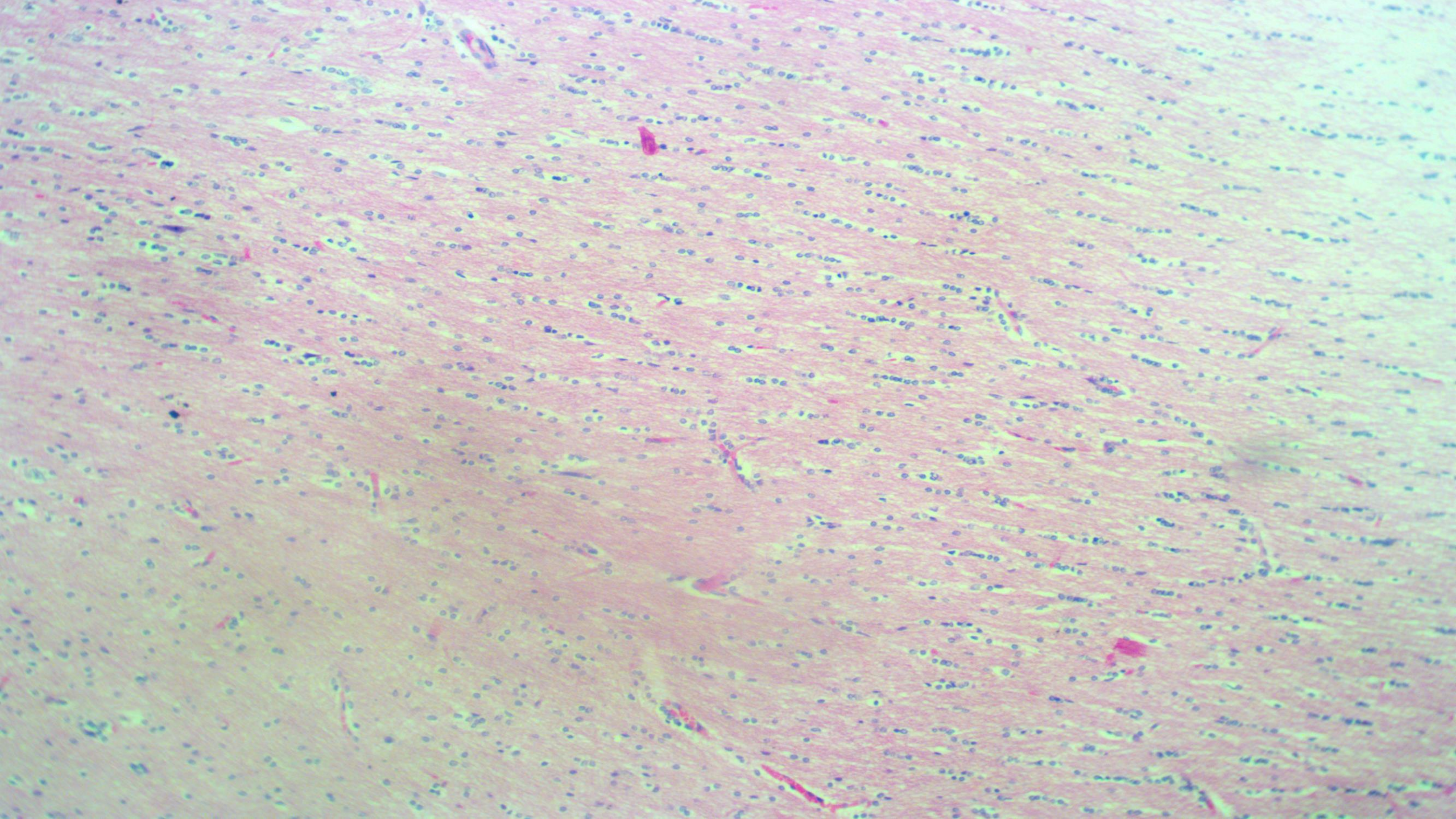
Lesion:

1. Vacuolar degeneration (vacuolation) and necrosis of neurons.
2. There is perivascular cuffing of lymphocytes and vasogenic edema.
3. Infiltration of Inflammatory cells which composed of lymphocytes, neutrophils









Diagnosis: Parasitic encephalitis (*Coenurus cerebralis*)

Organ: brain

Lesion:

1. Presence of larval stage of *Taenia multiceps* (*Coenurus cerebralis*) surrounded by connective tissue capsules.
2. Infiltration of inflammatory cells composed of varying numbers of neutrophils, lymphocytes, plasma cells, eosinophils, macrophages, multinucleate giant cells of the foreign body and Langhans type.
3. Pressure atrophy of parenchyma due to presence of parasite.

