



**Lecture title: Nasal Myiasis**

**Lecturer Affiliation: University of Mosul / College of Veterinary Medicine /  
Department of Pathology and Poultry Diseases/  
Assistant lecturer Atheer Nabeel Taha**

**Nasal Myiasis**

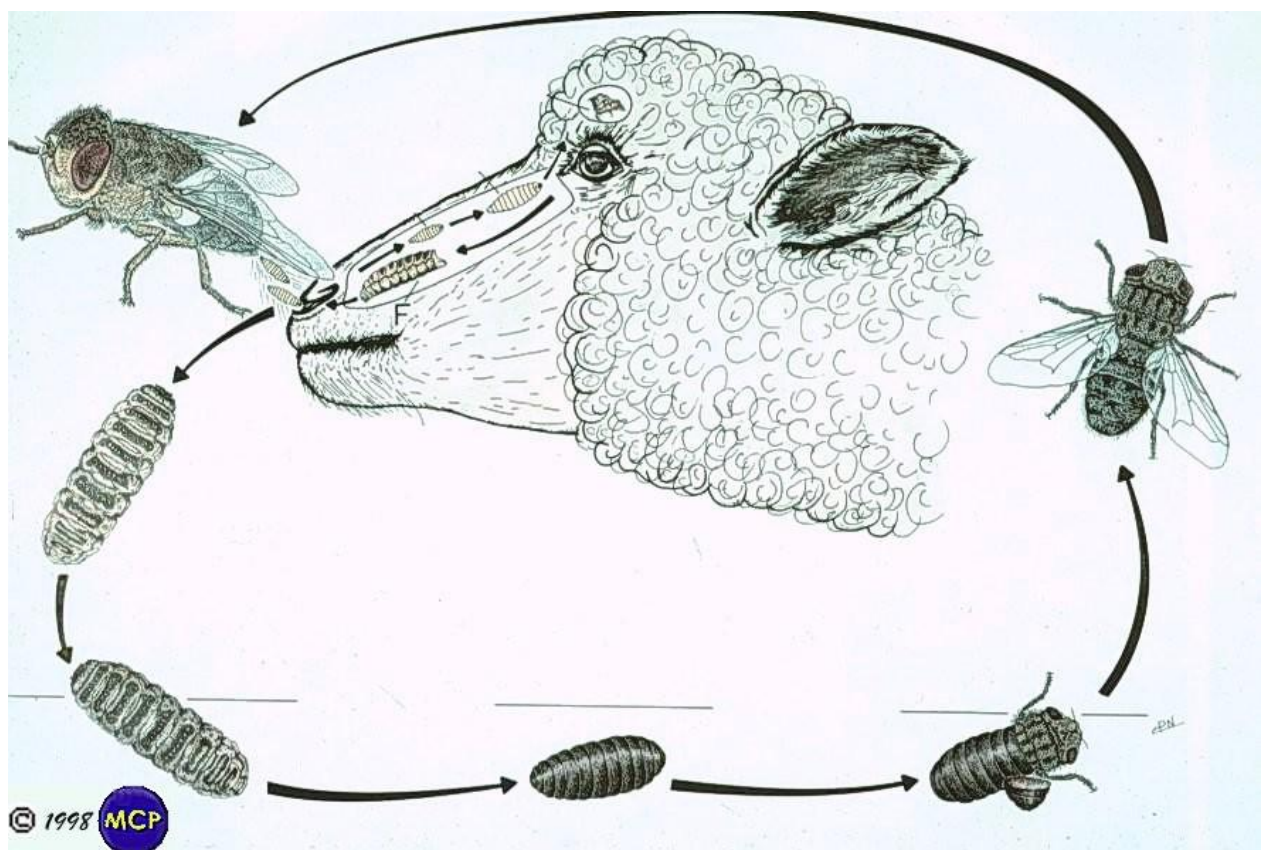
- is a chronic rhinitis and sinusitis caused by the larval forms of the botfly, *Oestrus ovis*.
- The botfly deposits eggs around the nostrils of sheep.
- The ova hatch and the larvae migrate throughout the nasal cavity and sinuses, feeding on mucus and debris.



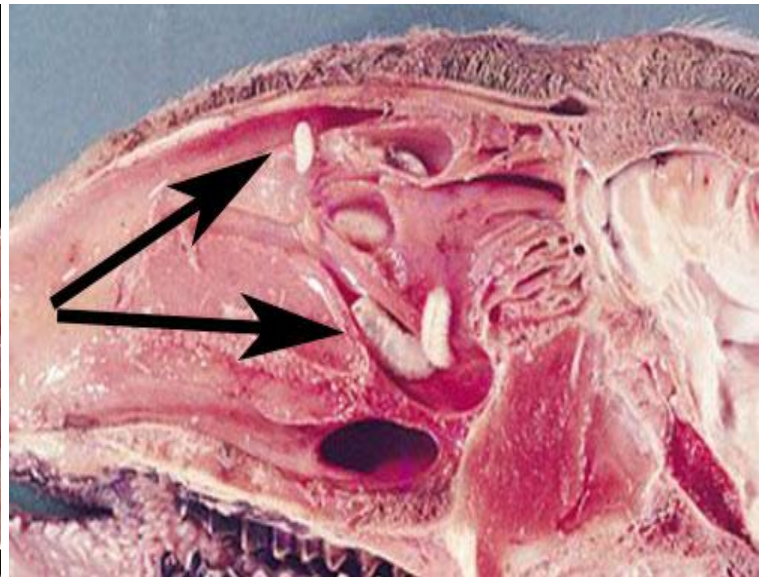
**Adult botfly of *Oestrus ovis***



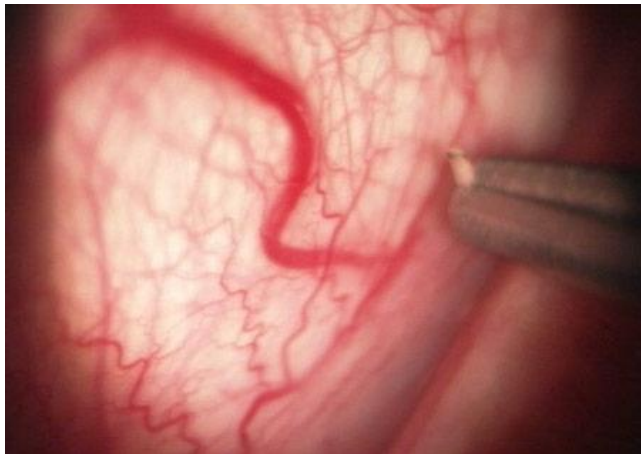
## Larval stage of *Oestrus ovis*



## Life cycle of *Oestrus ovis*



## **Presence of larval stage of *Oestrus ovis* in the sinuses and on nasal turbinate**



## ***Oestrus ovis* larvae ophthalmic human infestation**